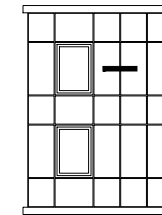


NOTES

\_ THE SPECIFICATION OF THE PROFILES, ACCESSORIES AND THEIR POSITIONING, HAS TO BE AGREED UPON STATIC ANALYSIS.

\_ THE STATIC ANALYSIS MUST BE APPLIED FOR EACH PROJECT AND HAS TO RESPECT THE INDIVIDUALITY OF THE PROJECT, SPECIFIC CONDITIONS AND LOCAL REGULATIONS. IT PROVIDES SAFETY CHECK, VERIFICATION OF THE COMPONENTS AND OPTIMIZATION.

\_ ALL TECHNICAL REQUIREMENTS GIVEN BY THE SUPPLIER OF THE CLADDING PANELS HAVE TO BE SATISFIED.



**Q-VENT**

RAINSCREEN SYSTEM

**QV9  
MECHANICAL FASTENING SYSTEM  
USING HANGERS**

CLADDING PANELS

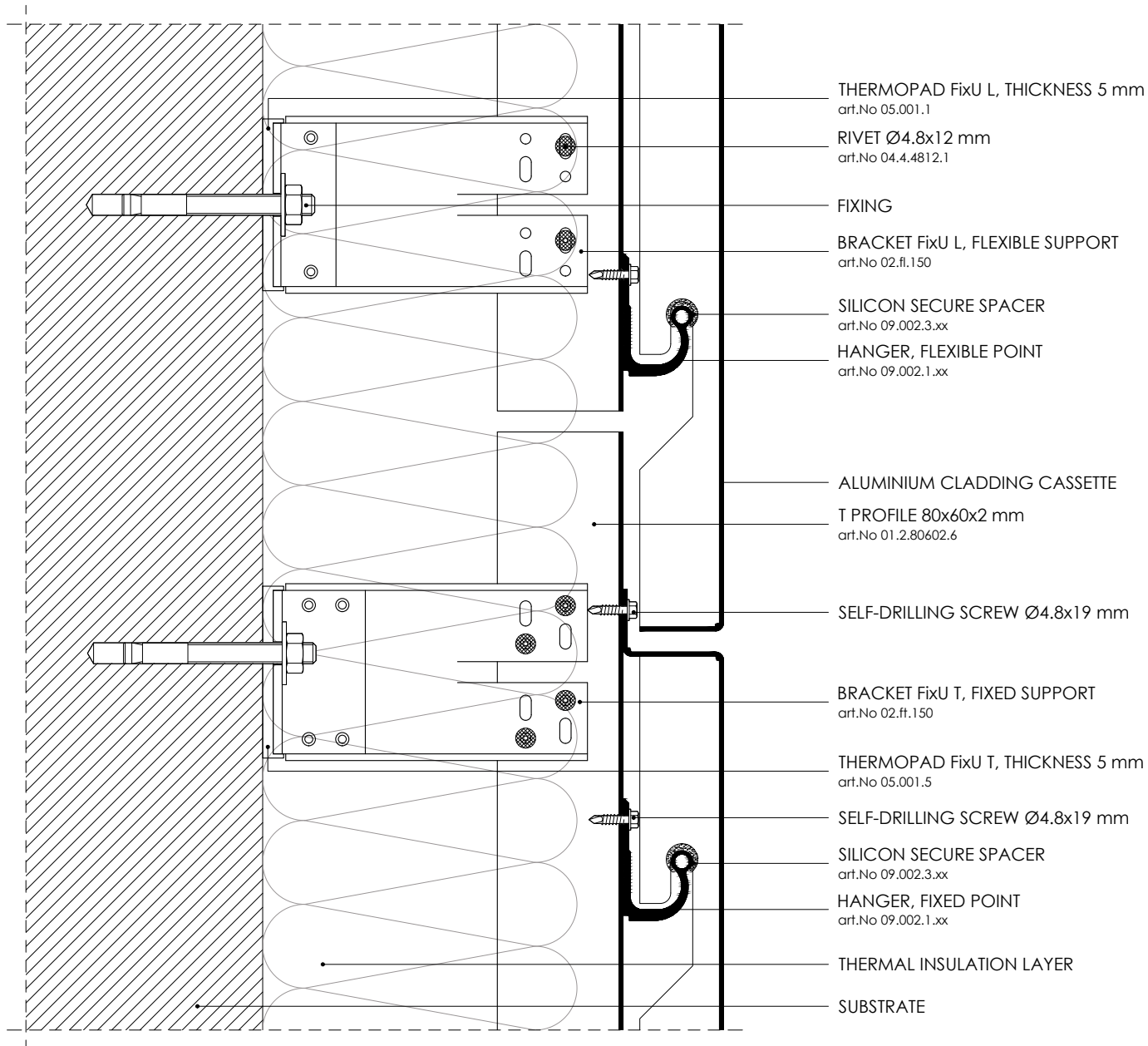
ALUMINIUM CASSETTES

DRAWING

01 HORIZONTAL SECTION

EDITION

JANUARY 2015

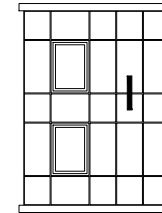


NOTES

\_ THE SPECIFICATION OF THE PROFILES, ACCESSORIES AND THEIR POSITIONING, HAS TO BE AGREED UPON STATIC ANALYSIS.

\_ THE STATIC ANALYSIS MUST BE APPLIED FOR EACH PROJECT AND HAS TO RESPECT THE INDIVIDUALITY OF THE PROJECT, SPECIFIC CONDITIONS AND LOCAL REGULATIONS. IT PROVIDES SAFETY CHECK, VERIFICATION OF THE COMPONENTS AND OPTIMIZATION.

\_ ALL TECHNICAL REQUIREMENTS GIVEN BY THE SUPPLIER OF THE CLADDING PANELS HAVE TO BE SATISFIED.



**Q-VENT**

RAINSCREEN SYSTEM

**QV9**  
**MECHANICAL FASTENING SYSTEM**  
**USING HANGERS**

CLADDING PANELS

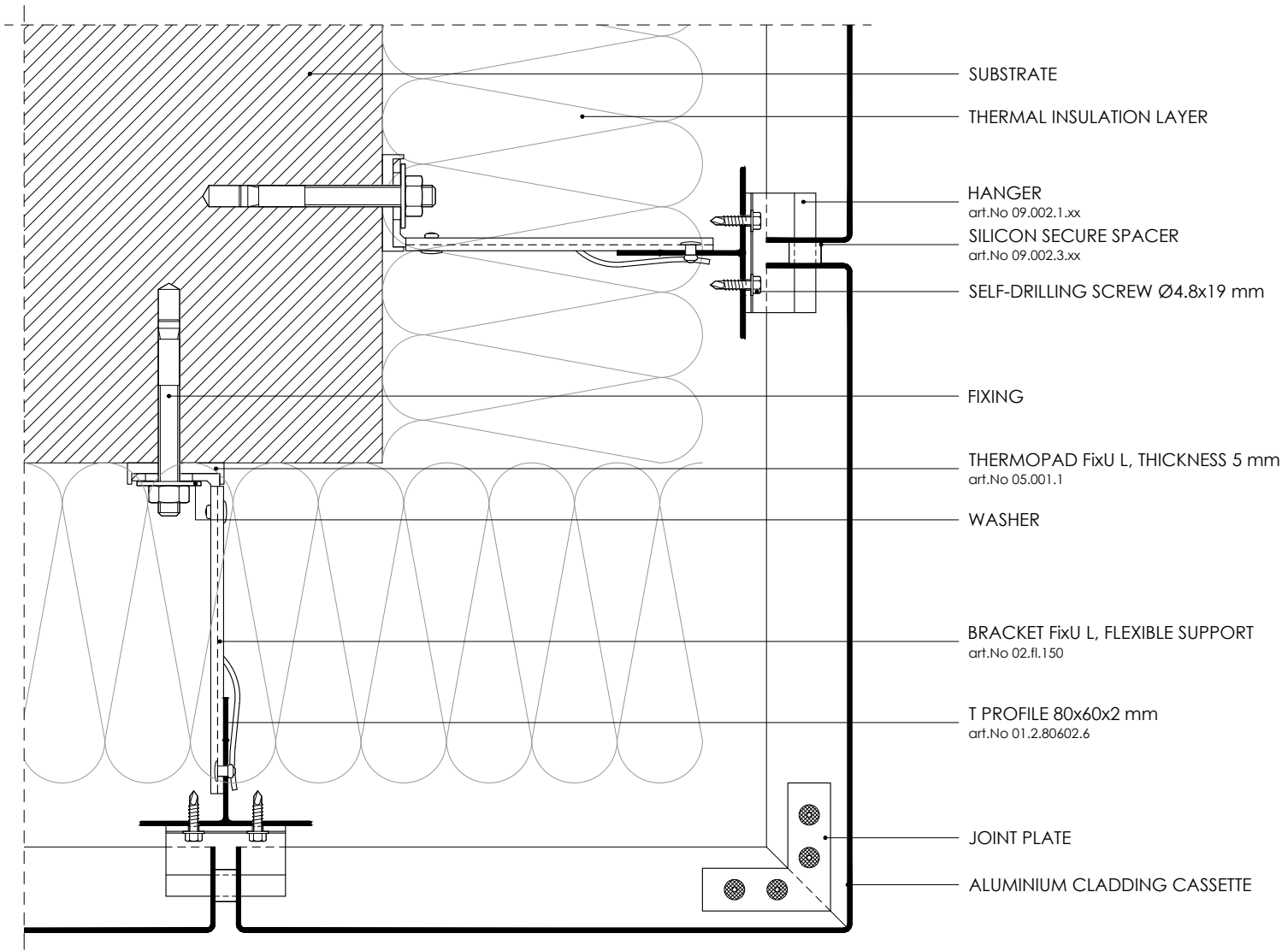
ALUMINIUM CASSETTES

DRAWING

02 VERTICAL SECTION

EDITION

JANUARY 2015



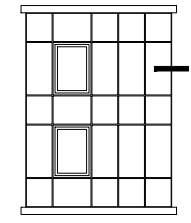
- SUBSTRATE
- THERMAL INSULATION LAYER
- HANGER  
art.No 09.002.1.xx
- SILICON SECURE SPACER  
art.No 09.002.3.xx
- SELF-DRILLING SCREW Ø4.8x19 mm
- FIXING
- THERMOPAD FixU L, THICKNESS 5 mm  
art.No 05.001.1
- WASHER
- BRACKET FixU L, FLEXIBLE SUPPORT  
art.No 02.fl.150
- T PROFILE 80x60x2 mm  
art.No 01.2.80602.6
- JOINT PLATE
- ALUMINIUM CLADDING CASSETTE

NOTES

\_ THE SPECIFICATION OF THE PROFILES, ACCESSORIES AND THEIR POSITIONING, HAS TO BE AGREED UPON STATIC ANALYSIS.

\_ THE STATIC ANALYSIS MUST BE APPLIED FOR EACH PROJECT AND HAS TO RESPECT THE INDIVIDUALITY OF THE PROJECT, SPECIFIC CONDITIONS AND LOCAL REGULATIONS. IT PROVIDES SAFETY CHECK, VERIFICATION OF THE COMPONENTS AND OPTIMIZATION.

\_ ALL TECHNICAL REQUIREMENTS GIVEN BY THE SUPPLIER OF THE CLADDING PANELS HAVE TO BE SATISFIED.



**Q-VENT**

RAINSCREEN SYSTEM

**QV9  
MECHANICAL FASTENING SYSTEM  
USING HANGERS**

CLADDING PANELS

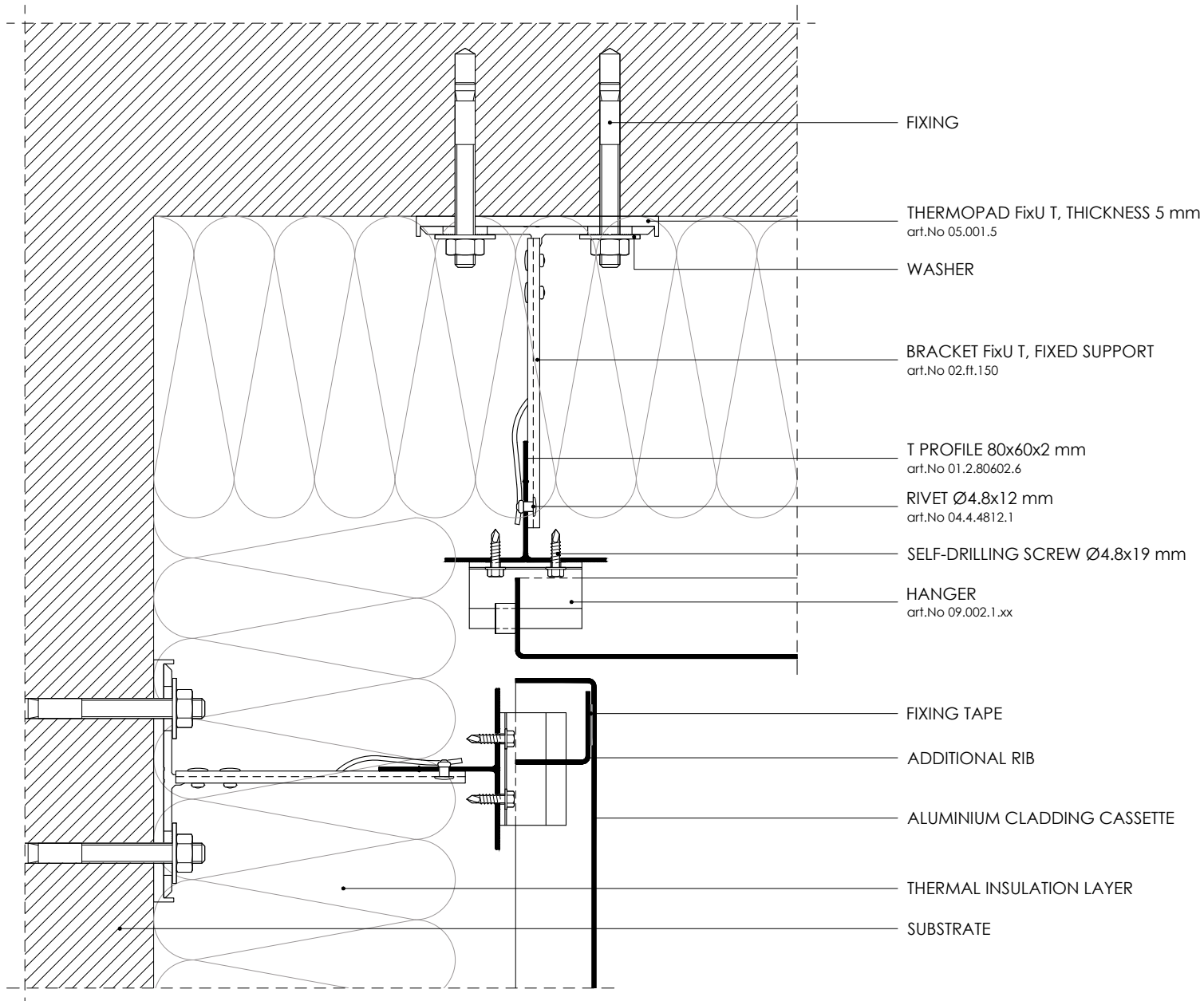
ALUMINIUM CASSETTES

DRAWING

03 EXTERNAL CORNER

EDITION

JANUARY 2015

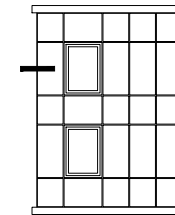


NOTES

\_ THE SPECIFICATION OF THE PROFILES, ACCESSORIES AND THEIR POSITIONING, HAS TO BE AGREED UPON STATIC ANALYSIS.

\_ THE STATIC ANALYSIS MUST BE APPLIED FOR EACH PROJECT AND HAS TO RESPECT THE INDIVIDUALITY OF THE PROJECT, SPECIFIC CONDITIONS AND LOCAL REGULATIONS. IT PROVIDES SAFETY CHECK, VERIFICATION OF THE COMPONENTS AND OPTIMIZATION.

\_ ALL TECHNICAL REQUIREMENTS GIVEN BY THE SUPPLIER OF THE CLADDING PANELS HAVE TO BE SATISFIED.



**Q-VENT**

RAINSCREEN SYSTEM

QV9  
MECHANICAL FASTENING SYSTEM  
USING HANGERS

CLADDING PANELS

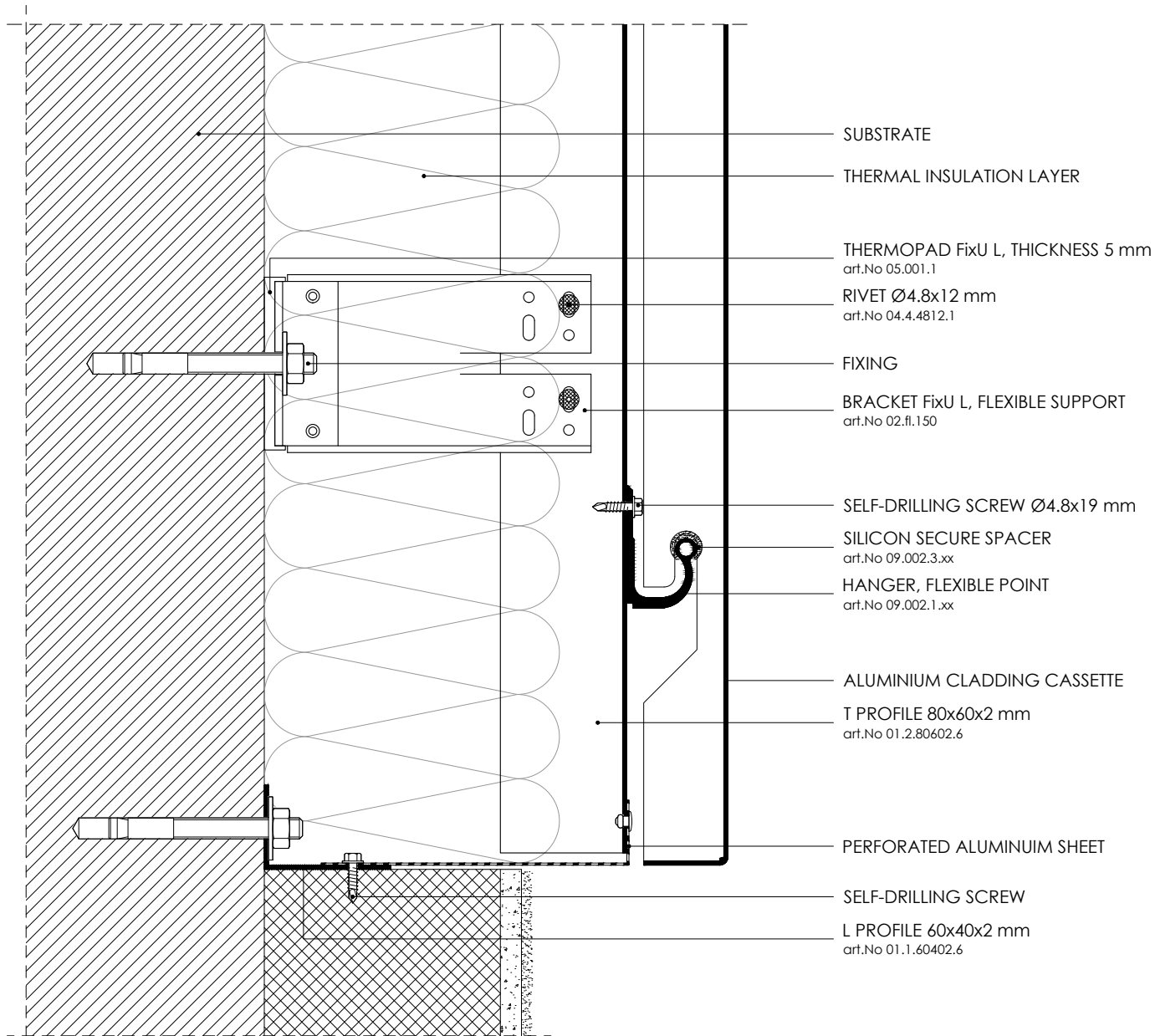
ALUMINIUM CASSETTES

DRAWING

04 INTERNAL CORNER

EDITION

JANUARY 2015

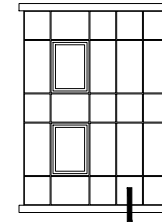


NOTES

\_ THE SPECIFICATION OF THE PROFILES, ACCESSORIES AND THEIR POSITIONING, HAS TO BE AGREED UPON STATIC ANALYSIS.

\_ THE STATIC ANALYSIS MUST BE APPLIED FOR EACH PROJECT AND HAS TO RESPECT THE INDIVIDUALITY OF THE PROJECT, SPECIFIC CONDITIONS AND LOCAL REGULATIONS. IT PROVIDES SAFETY CHECK, VERIFICATION OF THE COMPONENTS AND OPTIMIZATION.

\_ ALL TECHNICAL REQUIREMENTS GIVEN BY THE SUPPLIER OF THE CLADDING PANELS HAVE TO BE SATISFIED.



**Q-VENT**

RAINSCREEN SYSTEM

QV9  
MECHANICAL FASTENING SYSTEM  
USING HANGERS

CLADDING PANELS

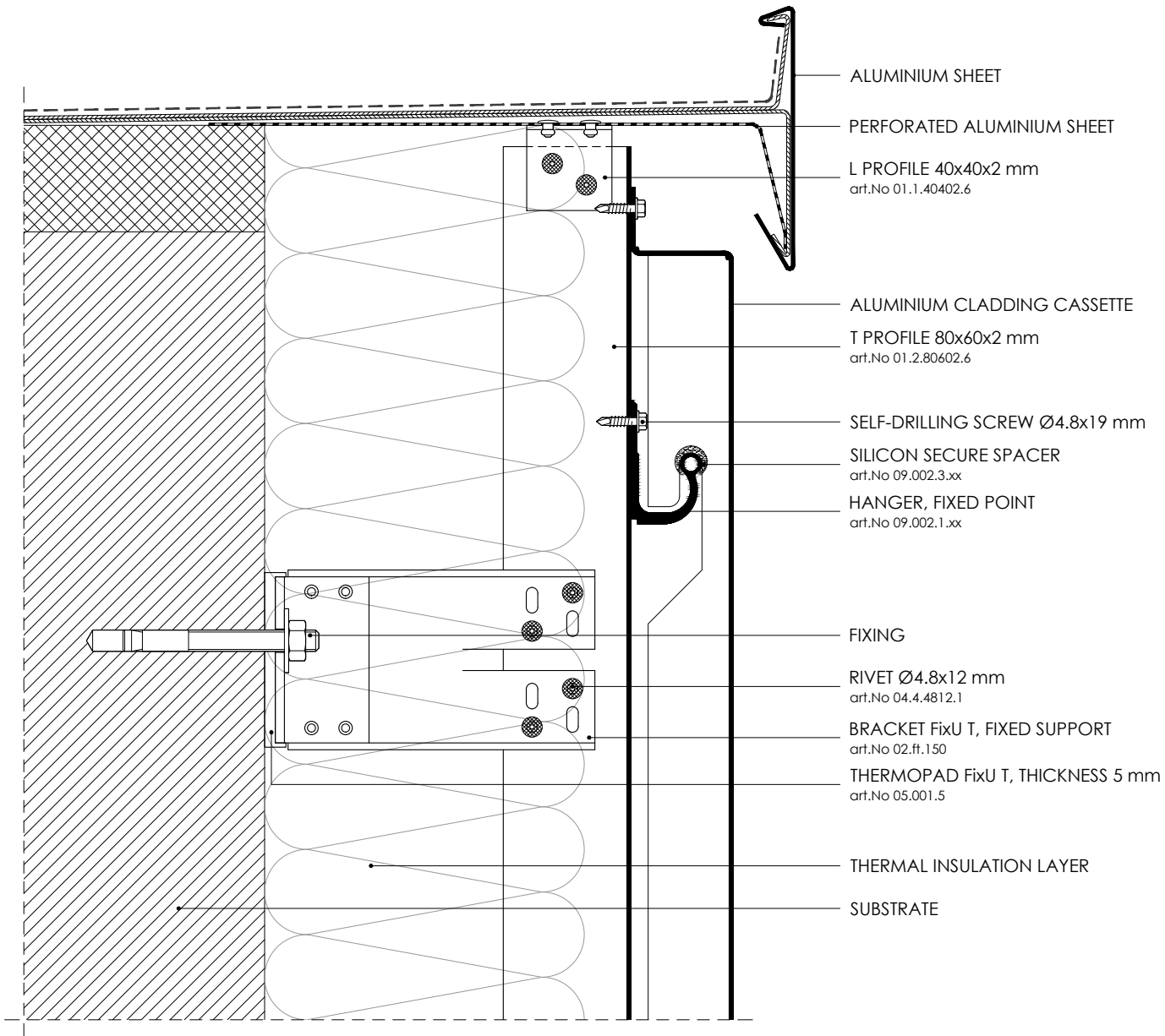
ALUMINIUM CASSETTES

DRAWING

05 VERTICAL SECTION\_FACADE BASE

EDITION

JANUARY 2015



ALUMINIUM SHEET

PERFORATED ALUMINIUM SHEET

L PROFILE 40x40x2 mm  
art.No 01.1.40402.6

ALUMINIUM CLADDING CASSETTE

T PROFILE 80x60x2 mm  
art.No 01.2.80602.6

SELF-DRILLING SCREW Ø4.8x19 mm

SILICON SECURE SPACER  
art.No 09.002.3.xx

HANGER, FIXED POINT  
art.No 09.002.1.xx

FIXING

RIVET Ø4.8x12 mm  
art.No 04.4.4812.1

BRACKET FixU T, FIXED SUPPORT  
art.No 02.ff.150

THERMOPAD FixU T, THICKNESS 5 mm  
art.No 05.001.5

THERMAL INSULATION LAYER

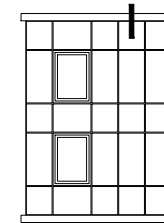
SUBSTRATE

NOTES

\_ THE SPECIFICATION OF THE PROFILES, ACCESSORIES AND THEIR POSITIONING, HAS TO BE AGREED UPON STATIC ANALYSIS.

\_ THE STATIC ANALYSIS MUST BE APPLIED FOR EACH PROJECT AND HAS TO RESPECT THE INDIVIDUALITY OF THE PROJECT, SPECIFIC CONDITIONS AND LOCAL REGULATIONS. IT PROVIDES SAFETY CHECK, VERIFICATION OF THE COMPONENTS AND OPTIMIZATION.

\_ ALL TECHNICAL REQUIREMENTS GIVEN BY THE SUPPLIER OF THE CLADDING PANELS HAVE TO BE SATISFIED.



**Q-VENT**

RAINSCREEN SYSTEM

**QV9**  
MECHANICAL FASTENING SYSTEM  
USING HANGERS

CLADDING PANELS

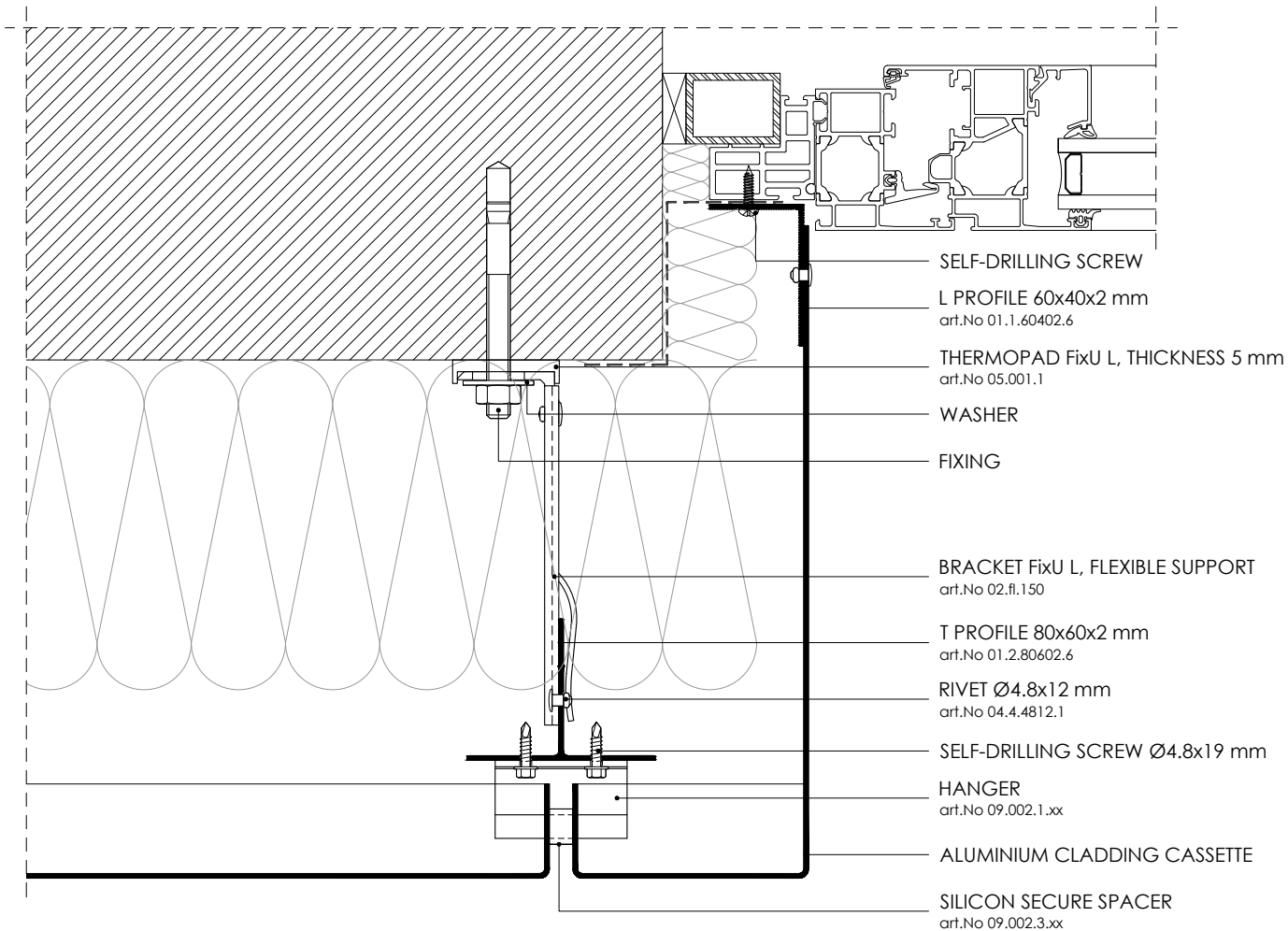
ALUMINIUM CASSETTES

DRAWING

06 VERTICAL SECTION\_ROOFBORDER COVER

EDITION

JANUARY 2015

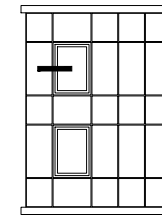


#### NOTES

\_ THE SPECIFICATION OF THE PROFILES, ACCESSORIES AND THEIR POSITIONING, HAS TO BE AGREED UPON STATIC ANALYSIS.

\_ THE STATIC ANALYSIS MUST BE APPLIED FOR EACH PROJECT AND HAS TO RESPECT THE INDIVIDUALITY OF THE PROJECT, SPECIFIC CONDITIONS AND LOCAL REGULATIONS. IT PROVIDES SAFETY CHECK, VERIFICATION OF THE COMPONENTS AND OPTIMIZATION.

\_ ALL TECHNICAL REQUIREMENTS GIVEN BY THE SUPPLIER OF THE CLADDING PANELS HAVE TO BE SATISFIED.



## Q-VENT

RAINSCREEN SYSTEM

### QV9 MECHANICAL FASTENING SYSTEM USING HANGERS

CLADDING PANELS

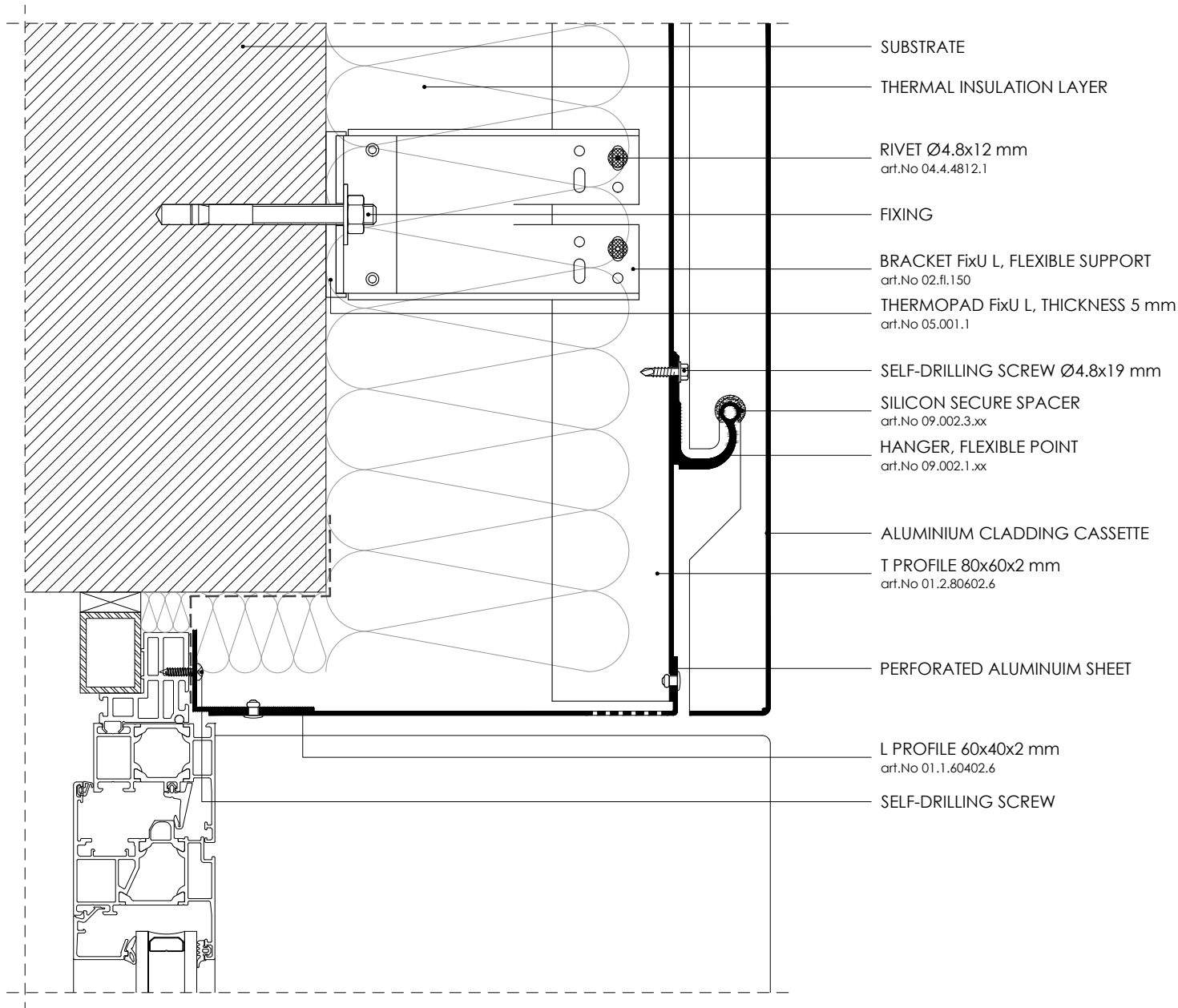
ALUMINIUM CASSETTES

DRAWING

07.1 HORIZONTAL SECTION\_WINDOW REVEAL

EDITION

JANUARY 2015



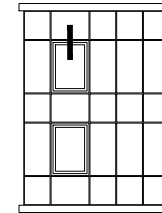
- SUBSTRATE
- THERMAL INSULATION LAYER
- RIVET Ø4.8x12 mm  
art.No 04.4.4812.1
- FIXING
- BRACKET FixU L, FLEXIBLE SUPPORT  
art.No 02.fl.150
- THERMOPAD FixU L, THICKNESS 5 mm  
art.No 05.001.1
- SELF-DRILLING SCREW Ø4.8x19 mm
- SILICON SECURE SPACER  
art.No 09.002.3.xx
- HANGER, FLEXIBLE POINT  
art.No 09.002.1.xx
- ALUMINIUM CLADDING CASSETTE
- T PROFILE 80x60x2 mm  
art.No 01.2.80602.6
- PERFORATED ALUMINIUM SHEET
- L PROFILE 60x40x2 mm  
art.No 01.1.60402.6
- SELF-DRILLING SCREW

NOTES

\_ THE SPECIFICATION OF THE PROFILES, ACCESSORIES AND THEIR POSITIONING, HAS TO BE AGREED UPON STATIC ANALYSIS.

\_ THE STATIC ANALYSIS MUST BE APPLIED FOR EACH PROJECT AND HAS TO RESPECT THE INDIVIDUALITY OF THE PROJECT, SPECIFIC CONDITIONS AND LOCAL REGULATIONS. IT PROVIDES SAFETY CHECK, VERIFICATION OF THE COMPONENTS AND OPTIMIZATION.

\_ ALL TECHNICAL REQUIREMENTS GIVEN BY THE SUPPLIER OF THE CLADDING PANELS HAVE TO BE SATISFIED.



**Q-VENT**

RAINSCREEN SYSTEM

**QV9**  
MECHANICAL FASTENING SYSTEM  
USING HANGERS

CLADDING PANELS

ALUMINIUM CASSETTES

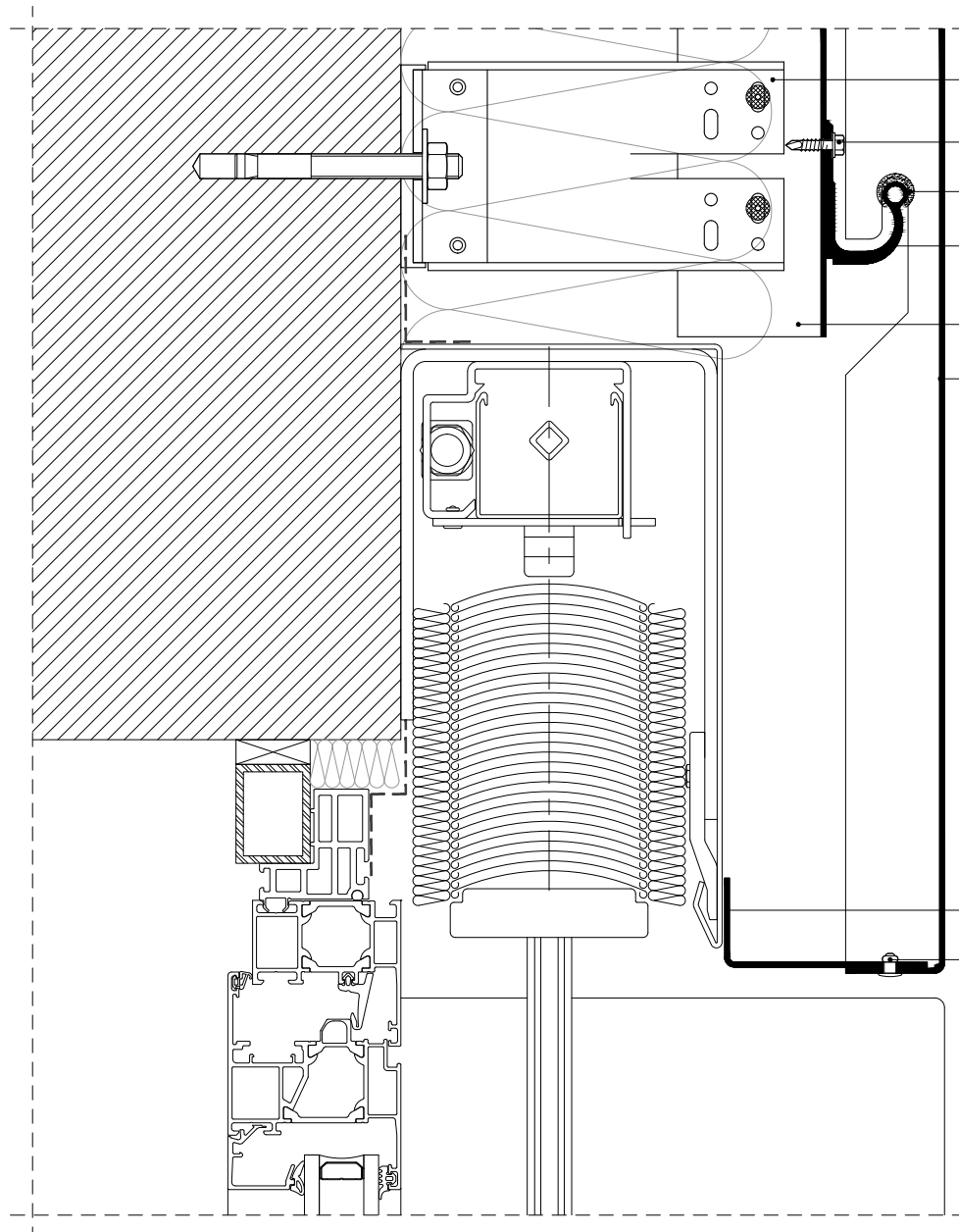
DRAWING

08.1 VERTICAL SECTION\_WINDOW LINTEL

EDITION

JANUARY 2015





BRACKET Fixu L, FLEXIBLE SUPPORT  
art.No 02.fl.150

SELF-DRILLING SCREW

SILICON SECURE SPACER  
art.No 09.002.3.xx

HANGER, FLEXIBLE POINT  
art.No 09.002.1.xx

T PROFILE 80x60x2 mm  
art.No 01.2.80602.6

ALUMINIUM CLADDING CASSETTE

FLASHING

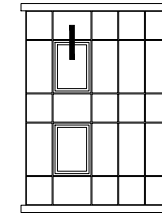
RIVET Ø4.8x12 mm  
art.No 04.4.4812.1

#### NOTES

\_ THE SPECIFICATION OF THE PROFILES, ACCESSORIES AND THEIR POSITIONING, HAS TO BE AGREED UPON STATIC ANALYSIS.

\_ THE STATIC ANALYSIS MUST BE APPLIED FOR EACH PROJECT AND HAS TO RESPECT THE INDIVIDUALITY OF THE PROJECT, SPECIFIC CONDITIONS AND LOCAL REGULATIONS. IT PROVIDES SAFETY CHECK, VERIFICATION OF THE COMPONENTS AND OPTIMIZATION.

\_ ALL TECHNICAL REQUIREMENTS GIVEN BY THE SUPPLIER OF THE CLADDING PANELS HAVE TO BE SATISFIED.



## Q-VENT

RAINSCREEN SYSTEM

QV9  
MECHANICAL FASTENING SYSTEM  
USING HANGERS

CLADDING PANELS

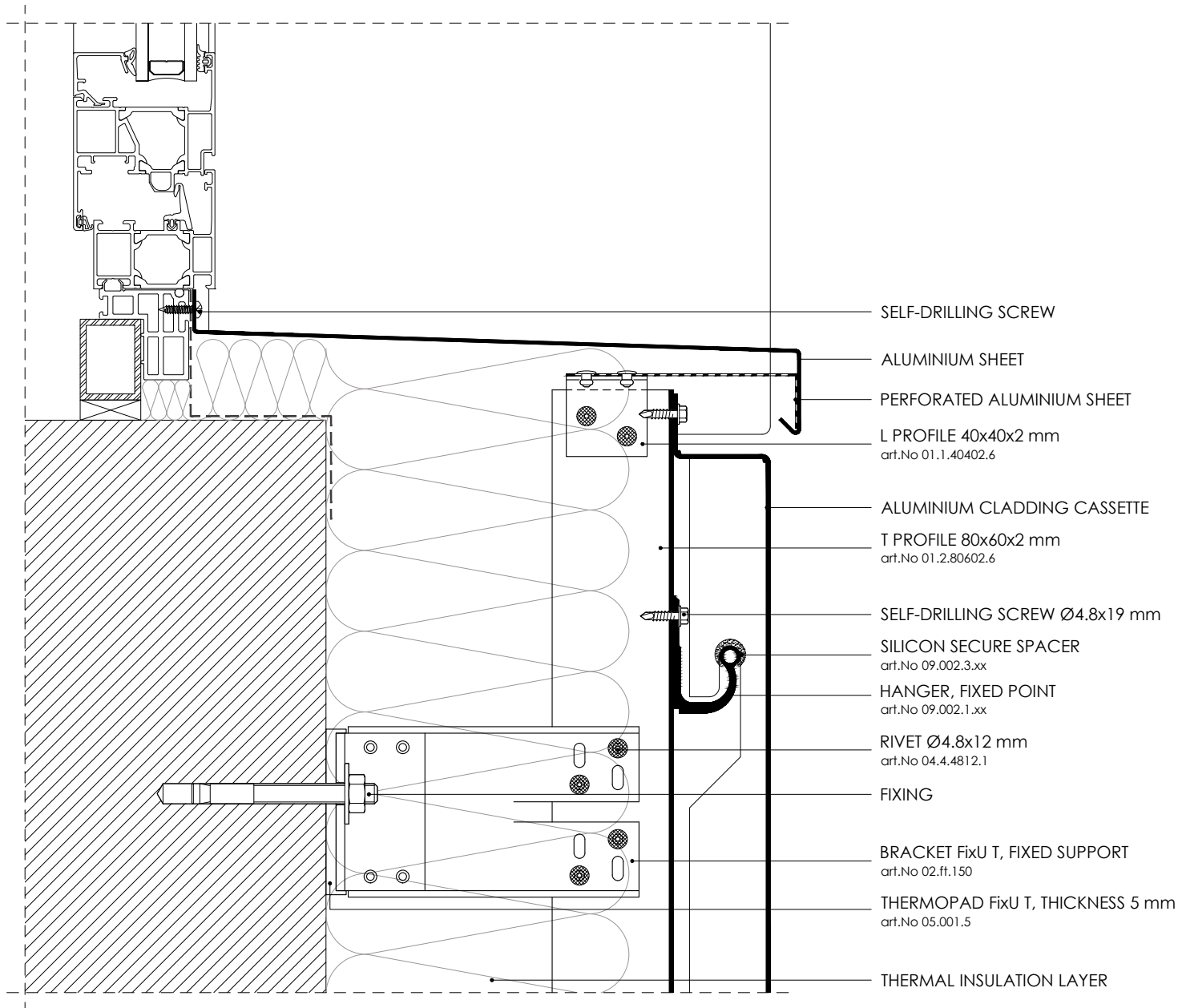
ALUMINIUM CASSETTES

DRAWING

08.2 VERTICAL SECTION\_WINDOW LINTEL

EDITION

JANUARY 2015

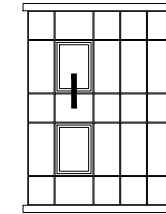


NOTES

\_ THE SPECIFICATION OF THE PROFILES, ACCESSORIES AND THEIR POSITIONING, HAS TO BE AGREED UPON STATIC ANALYSIS.

\_ THE STATIC ANALYSIS MUST BE APPLIED FOR EACH PROJECT AND HAS TO RESPECT THE INDIVIDUALITY OF THE PROJECT, SPECIFIC CONDITIONS AND LOCAL REGULATIONS. IT PROVIDES SAFETY CHECK, VERIFICATION OF THE COMPONENTS AND OPTIMIZATION.

\_ ALL TECHNICAL REQUIREMENTS GIVEN BY THE SUPPLIER OF THE CLADDING PANELS HAVE TO BE SATISFIED.



**Q-VENT**

RAINSCREEN SYSTEM

QV9  
MECHANICAL FASTENING SYSTEM  
USING HANGERS

CLADDING PANELS

ALUMINIUM CASSETTES

DRAWING

09 VERTICAL SECTION\_WINDOW SILL

EDITION

JANUARY 2015