

QV6.5

FLAT PANELS

HORIZONTAL RAIL

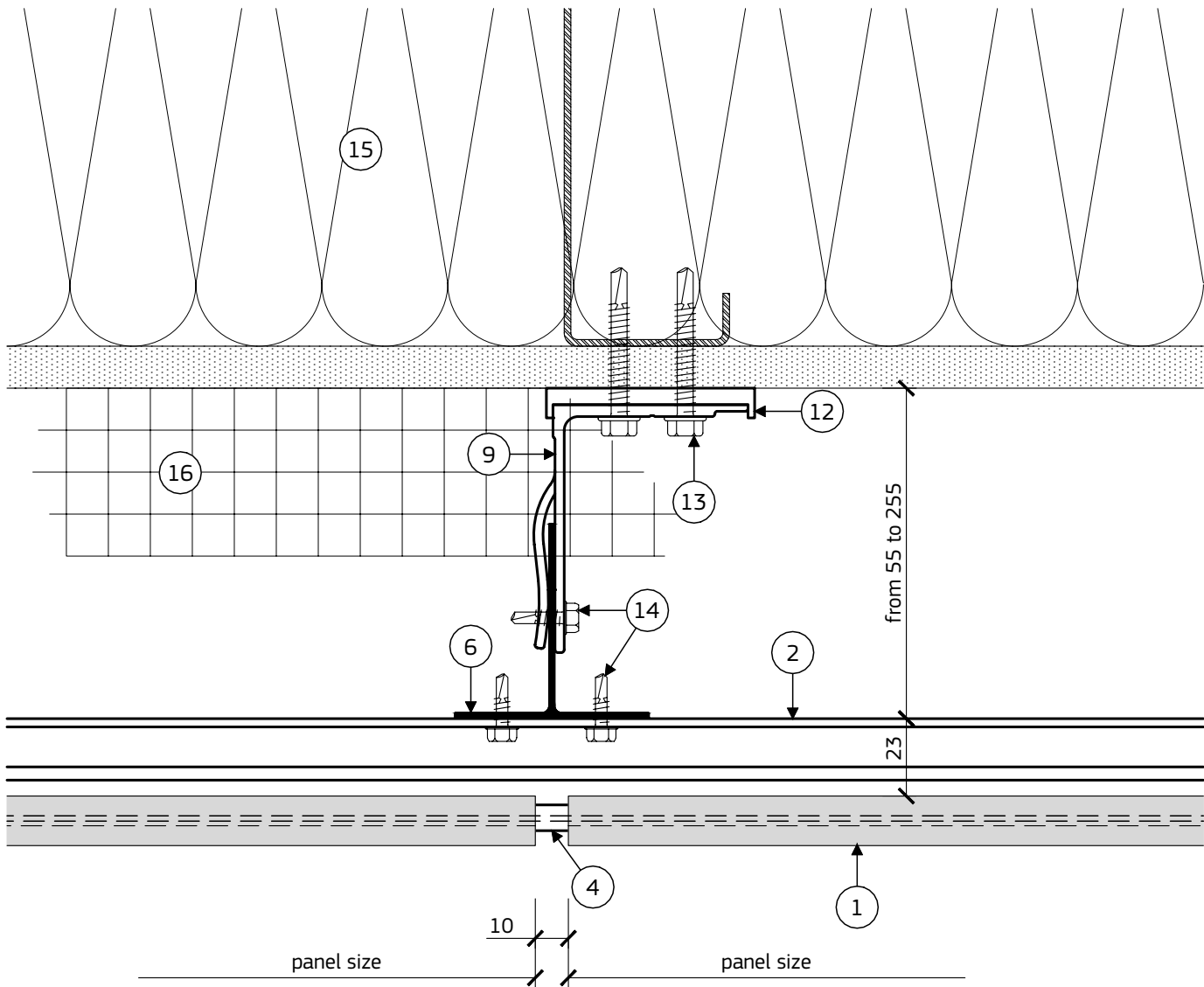
RAINSCREEN

SYSTEM

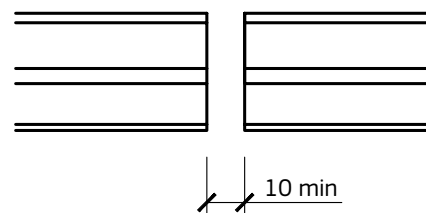
LEGEND

- ① UHPC PANEL Marestone
- ② MID HORIZONTAL RAIL *art.No 06.51.481.xxx*
- ③ END HORIZONTAL RAIL *art.No 06.52.481.xxx*
- ④ JOINT SPACER *art.No 06.502.10.9005*
- ⑤ GASKET *art.No 06.501.xxx*
- ⑥ PROFILE T59x59x1.9 *art.No 01.2.595919.xxx*
- ⑦ PROFILE L60x40x2 *art.No 01.1.60402.xxx*
- ⑧ WALL BRACKET QVB 75/160, FIXED POINT *art.No 02.75.160.63*
- ⑨ WALL BRACKET QVB 75/70, SLIDING POINT *art.No 02.75.70.63*
- ⑩ WALL BRACKET QVB 125/70, SLIDING POINT *art.No 02.125.70.63*
- ⑪ THERMO-PAD 160x59 *art.No 05.59.160*
- ⑫ THERMO-PAD 70x59 *art.No 05.59.70*
- ⑬ SELF-DRILLING SCREW Ø6.3x45 mm, A2
- ⑭ SELF-DRILLING SCREW Ø4.8x16 mm, A2
- ⑮ STUD WALL
- ⑯ INSULATION
- ⑰ WINDOW SYSTEM
- ⑱ METAL TRIM / FLASHING / COPING
- ⑲ PERFORATED ALUMINUM SHEET

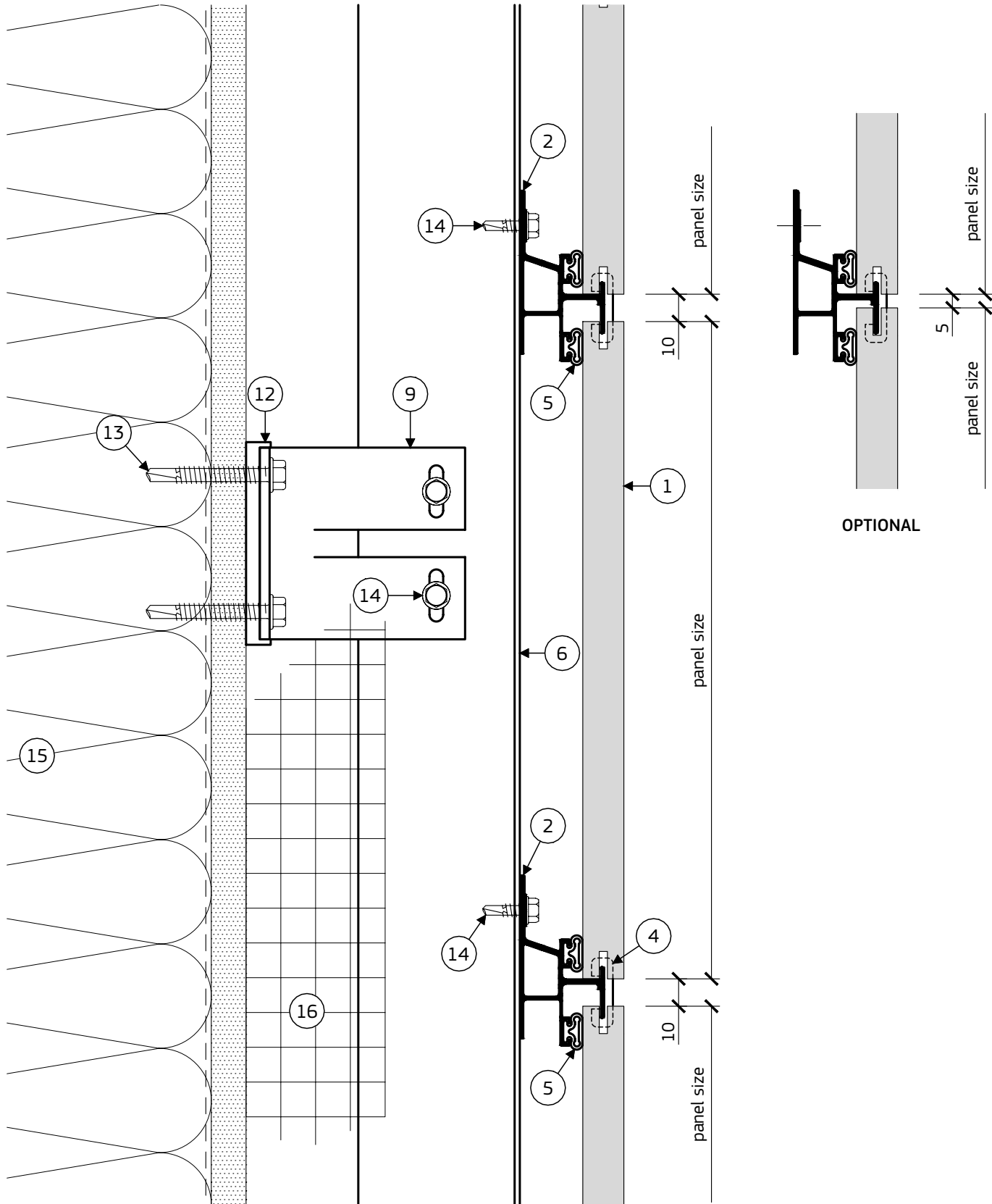
1.1 PLAN DETAIL



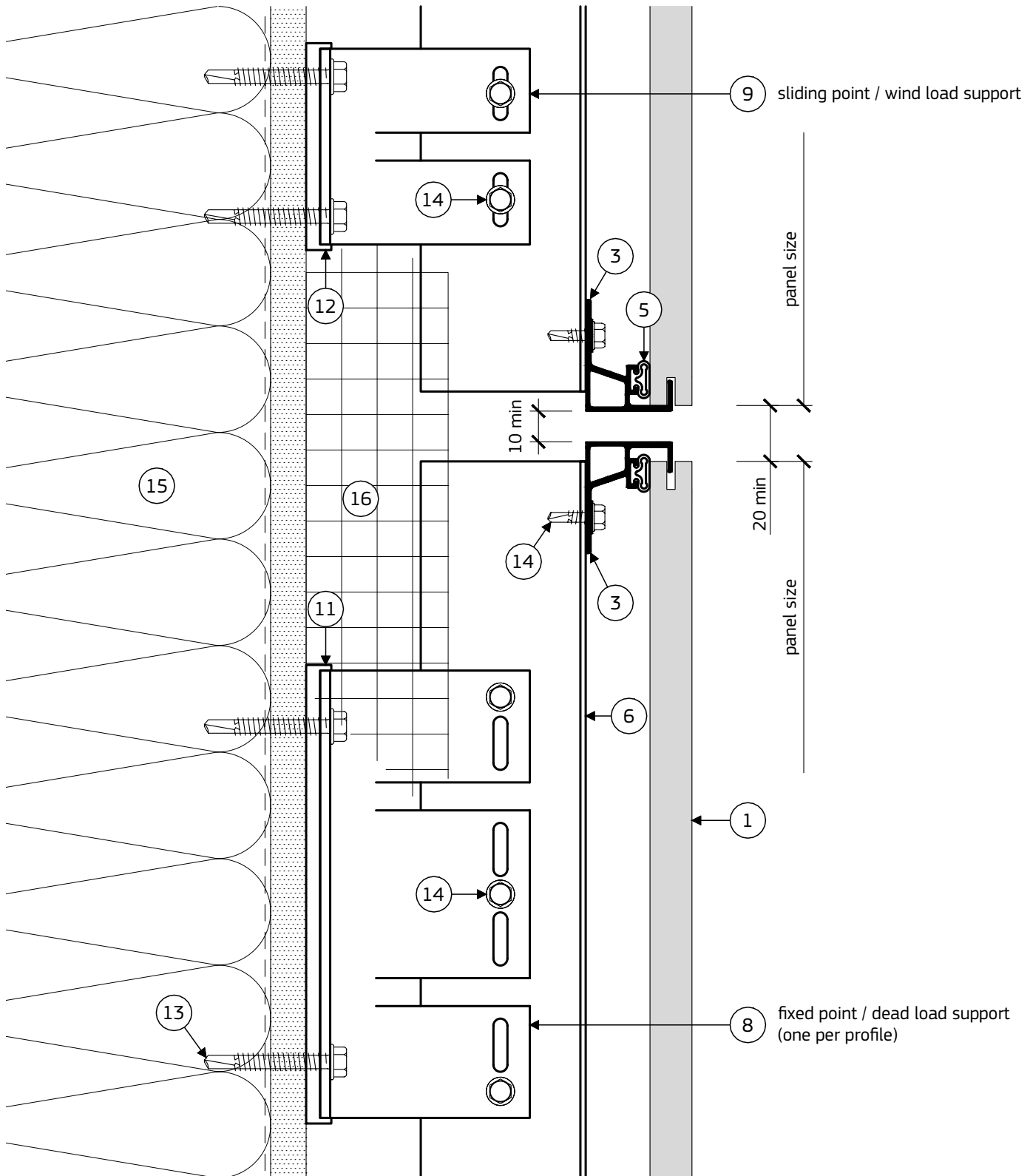
HORIZONTAL RAILS' JOINT



2.1 SECTION DETAIL

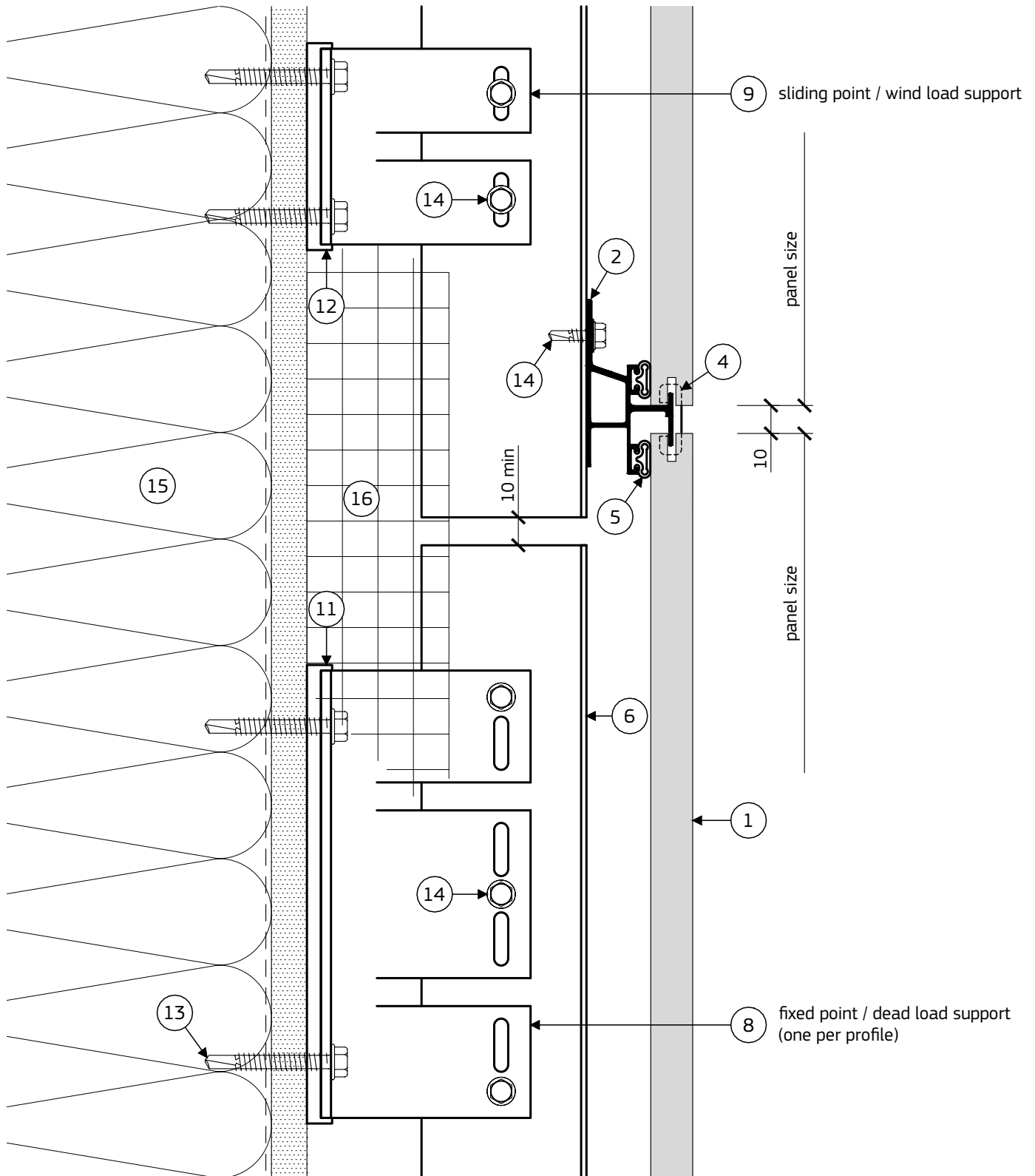


2.2 SECTION DETAIL



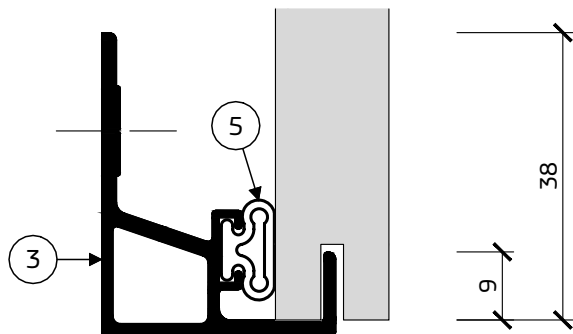
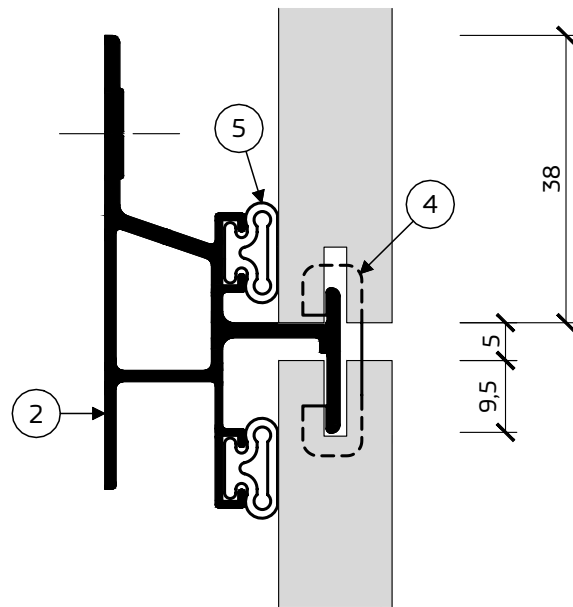
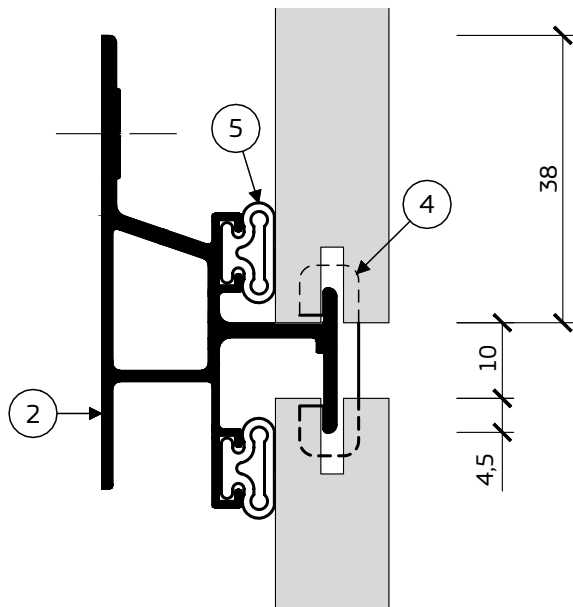
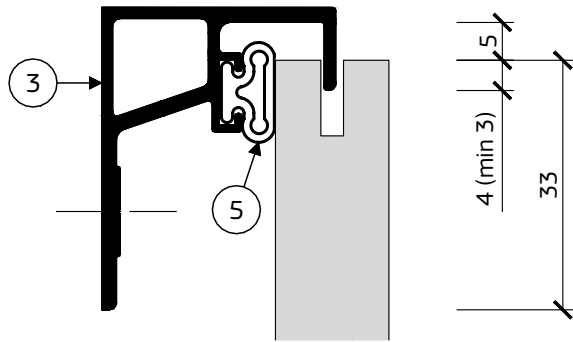
The profiles should be fixed using normal clearance holes (fixed point) and allowed to expand using slotted holes (sliding points), considering the fastener to fall at the center of the hole.

2.3 SECTION DETAIL

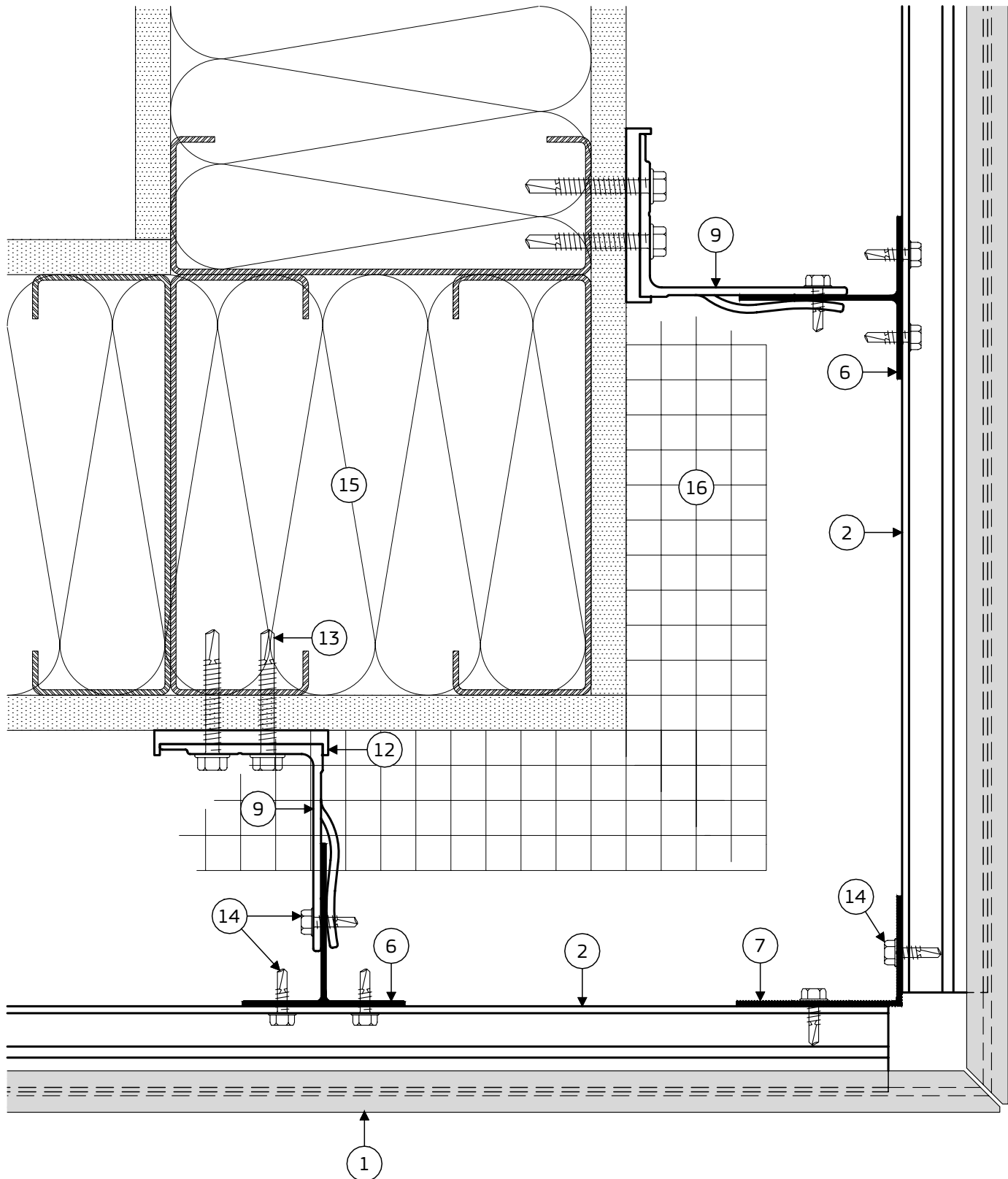


The profiles should be fixed using normal clearance holes (fixed point) and allowed to expand using slotted holes (sliding points), considering the fastener to fall at the center of the hole.

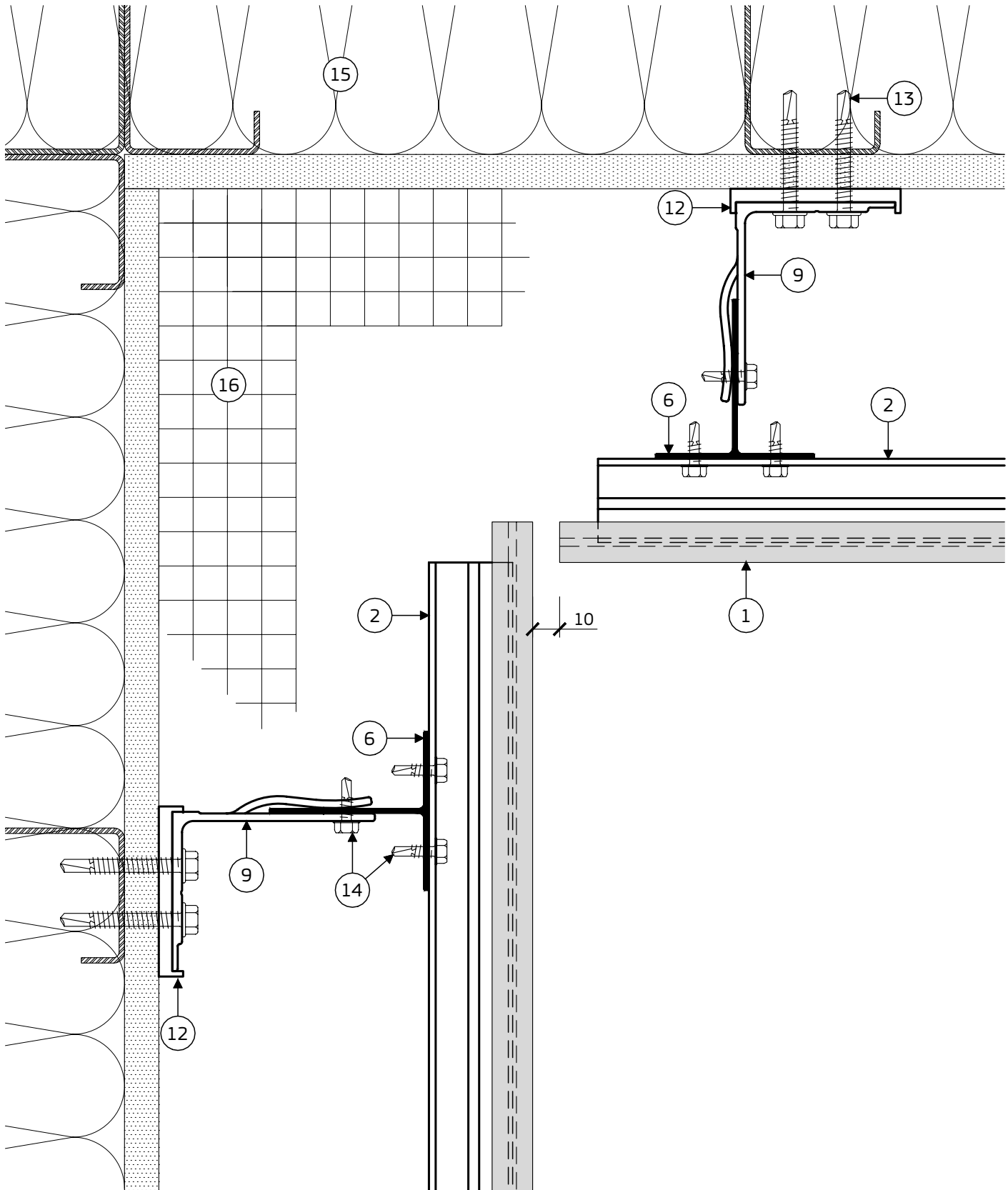
INSTALLATION DIAGRAMS



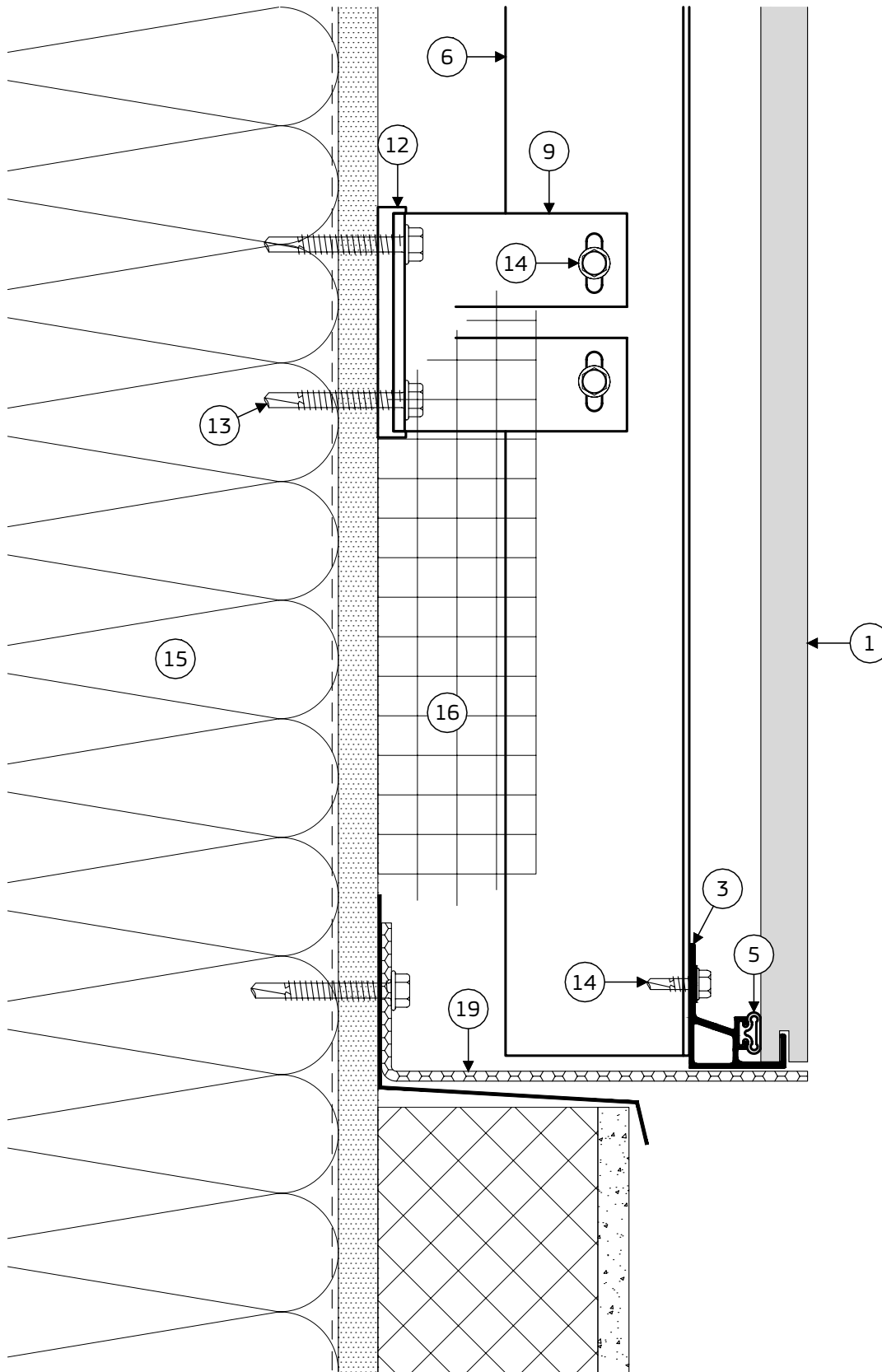
3.1 PLAN DETAIL - OUTSIDE CORNER



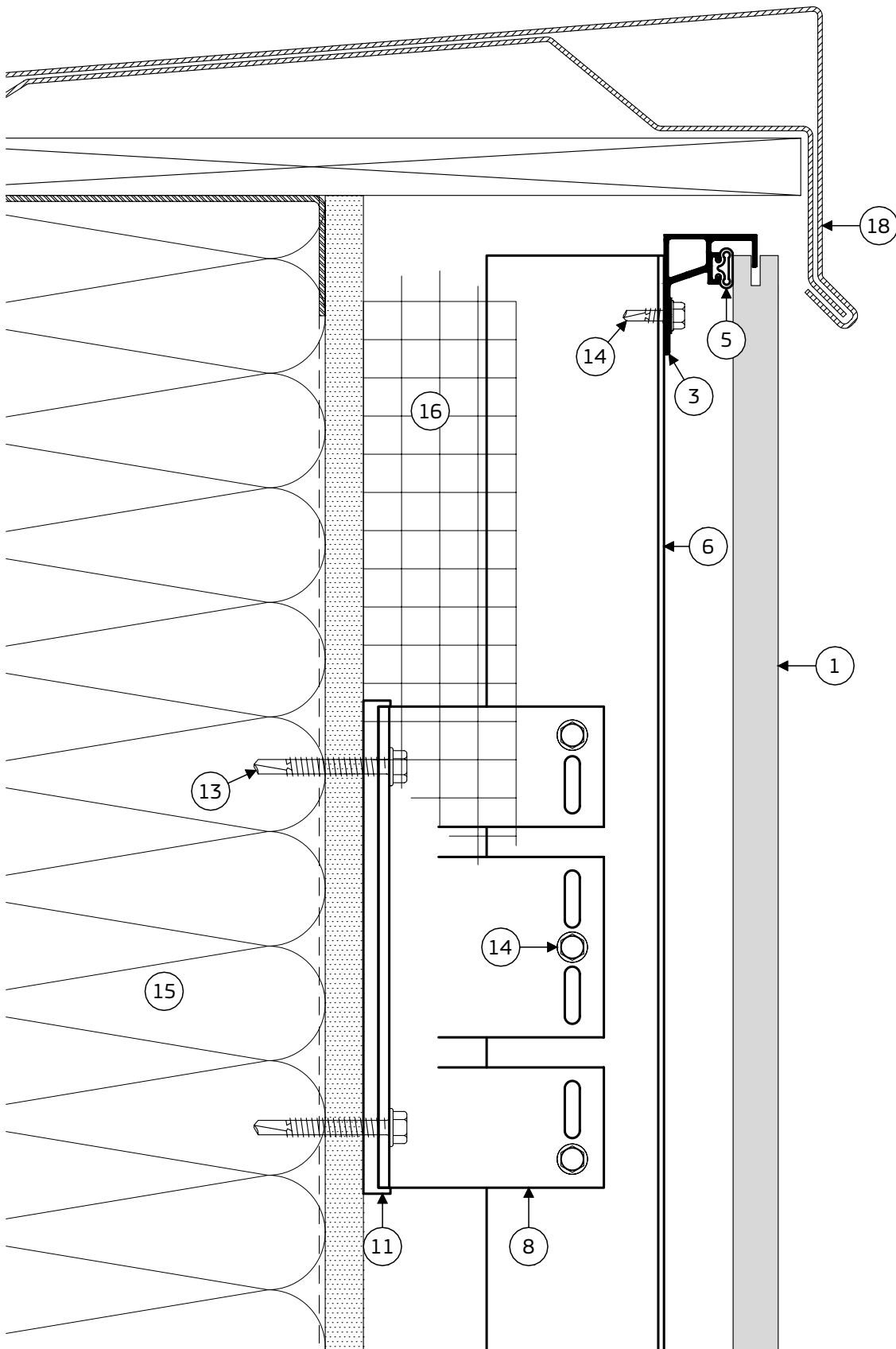
4.1 PLAN DETAIL - INSIDE CORNER



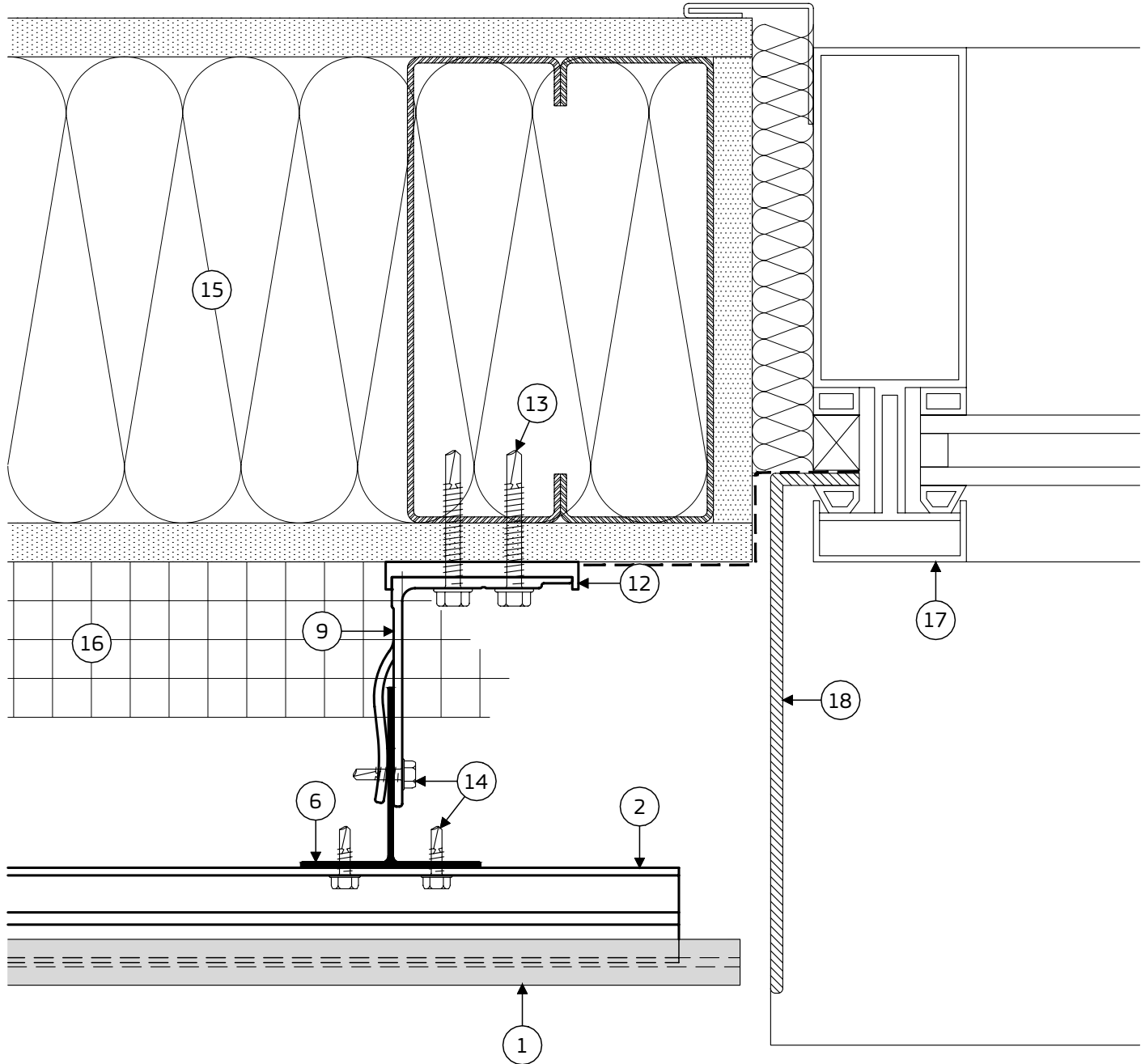
5.1 SECTION DETAIL - BASE



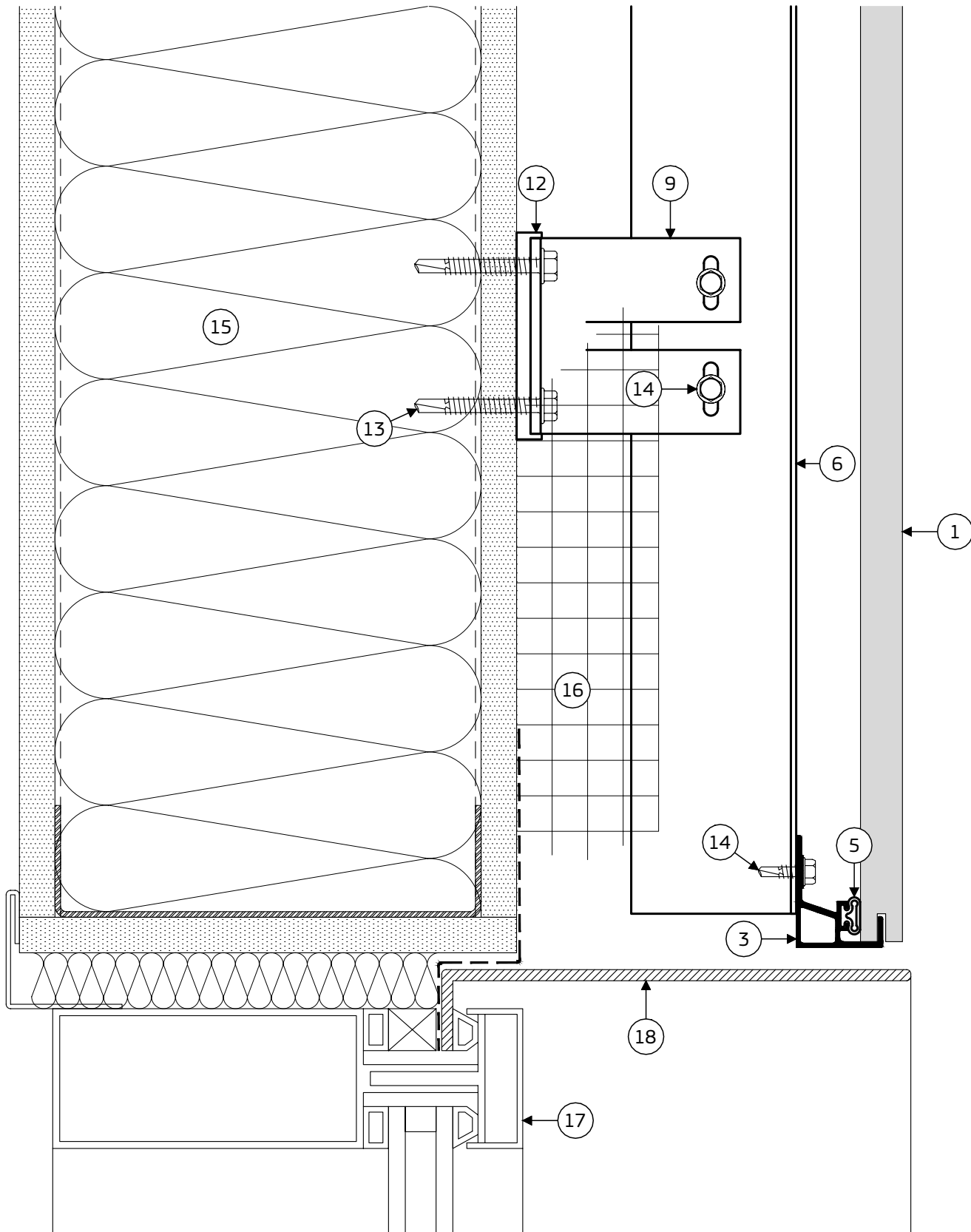
6.1 SECTION DETAIL - PARAPET



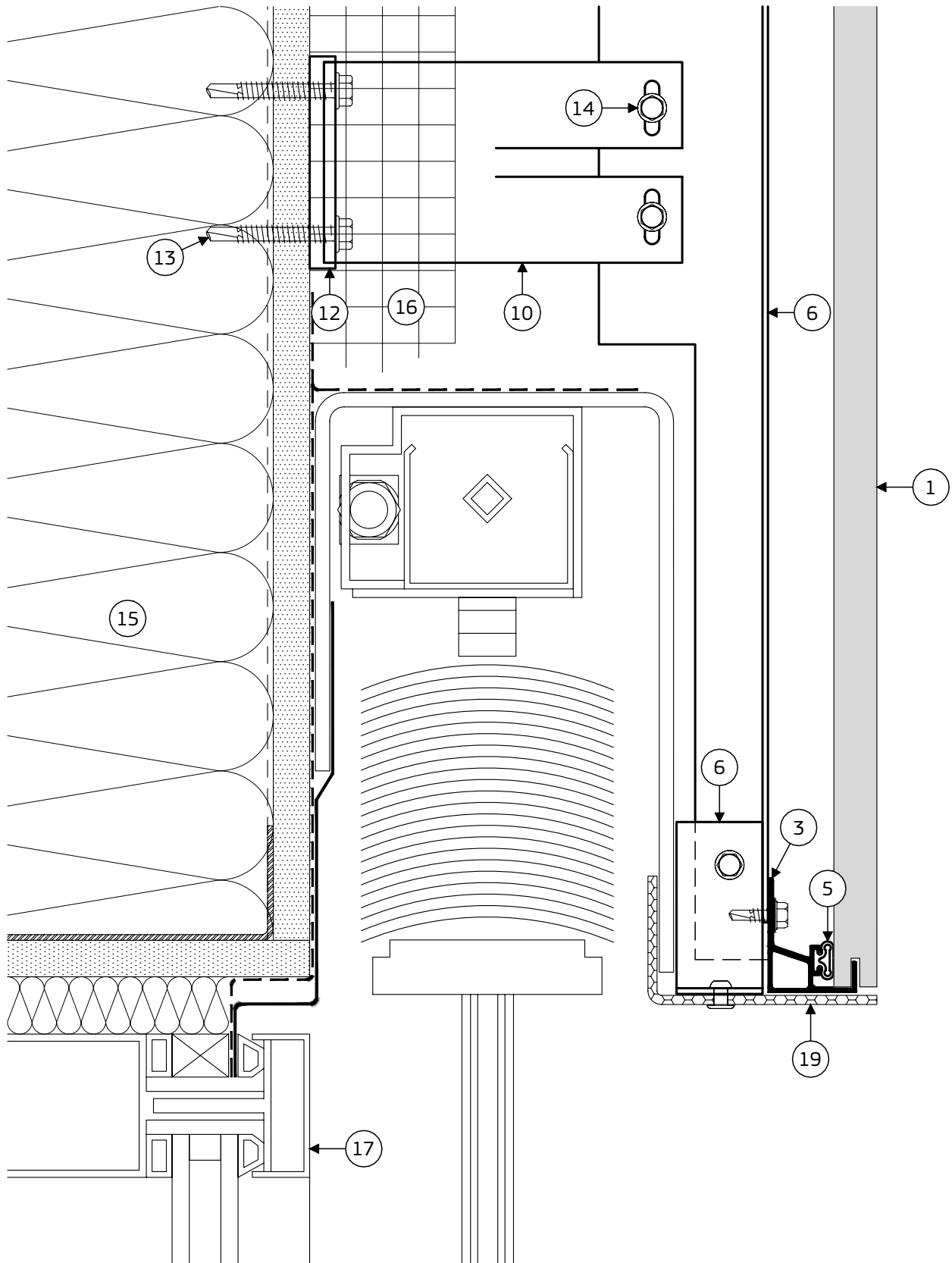
7.1 PLAN DETAIL - WINDOW JAMB



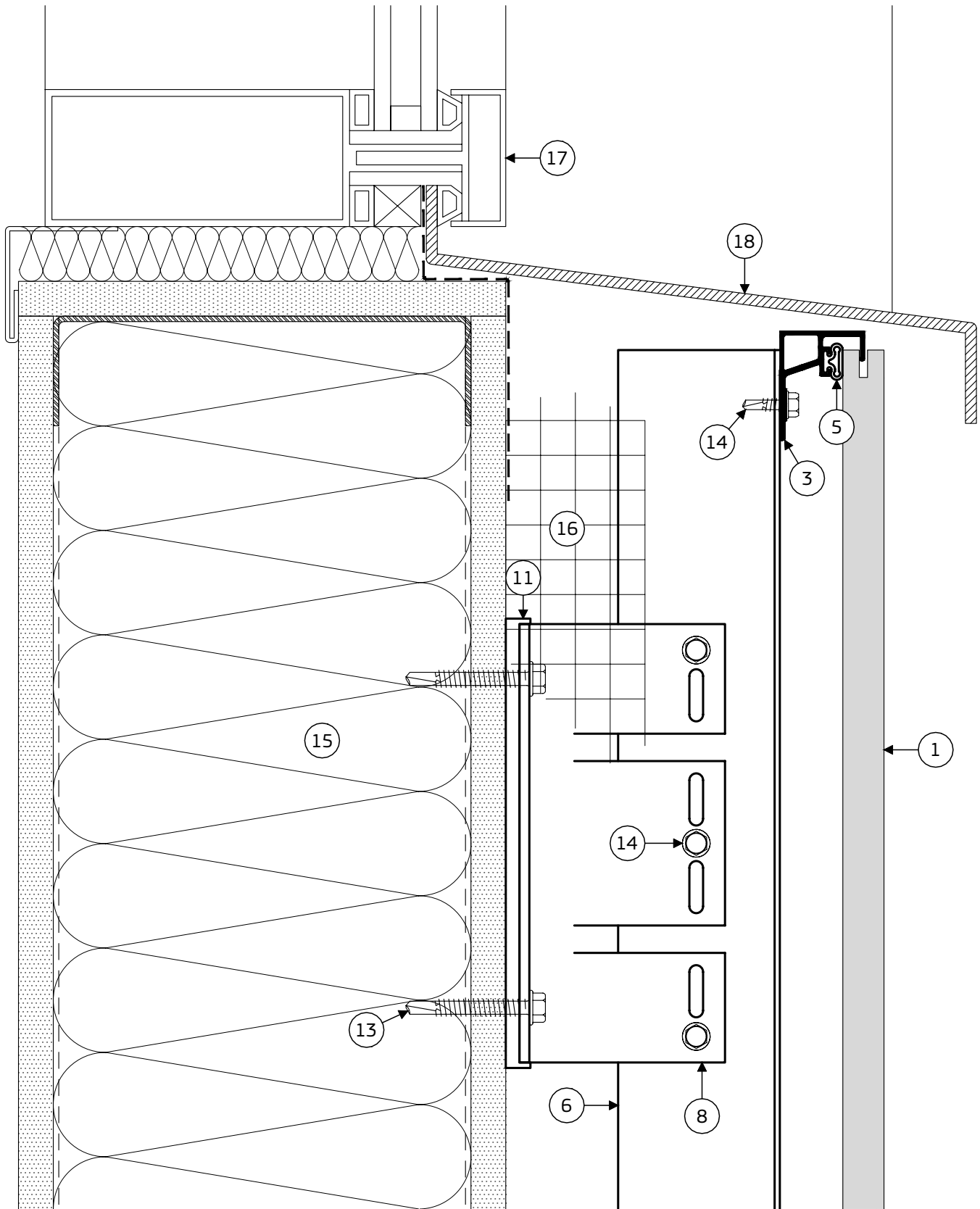
8.1 SECTION DETAIL - WINDOW HEAD



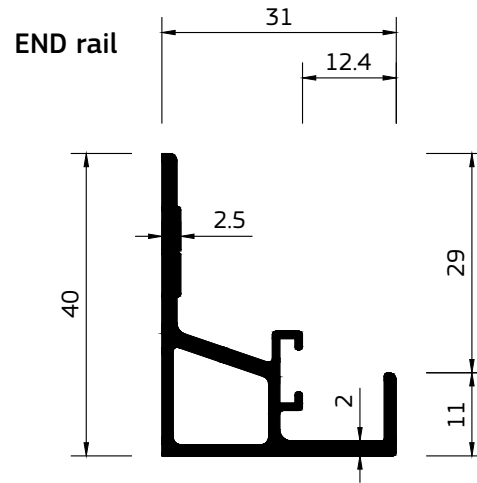
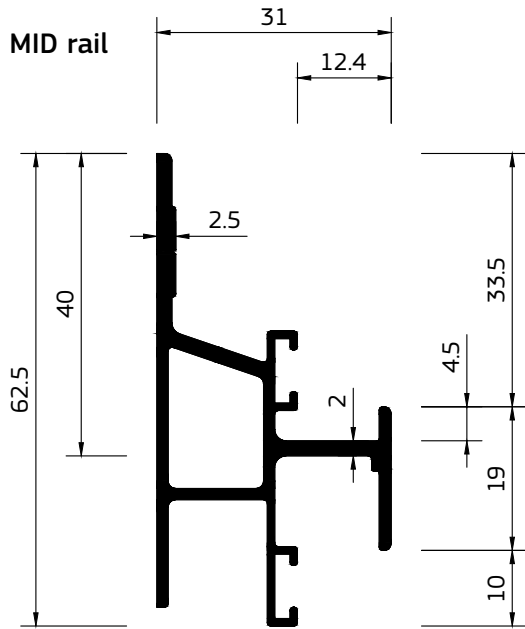
8.2 SECTION DETAIL - WINDOW HEAD



9.1 SECTION DETAIL - WINDOW SILL



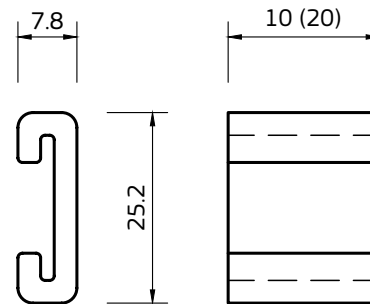
SYSTEM COMPONENTS



GASKET



SPACER



Article No	Description	Finish	Material	Weight
06.51.xxx	MID horizontal rail	unpainted	AW 6063 T66	756 g/m
06.51.xxxP	MID horizontal rail	painted black	AW 6063 T66	
06.52.xxx	END horizontal rail	unpainted	AW 6063 T66	540 g/m
06.52.xxxP	END horizontal rail	painted black	AW 6063 T66	
06.501.xxx	GASKET	black	EPDM	60 g/m
06.502.10.9005	JOINT SPACER 10 mm	black	Silicone	2 g/pc
06.502.20.9005	JOINT SPACER 20 mm	black	Silicone	4 g/pc

xxx - profile length

Standard length 6000 mm.

Other colors or anodized finishes on request.

Slotted holes on request.