

QV1.2

FLAT PANELS

VISIBLE

RAINSCREEN

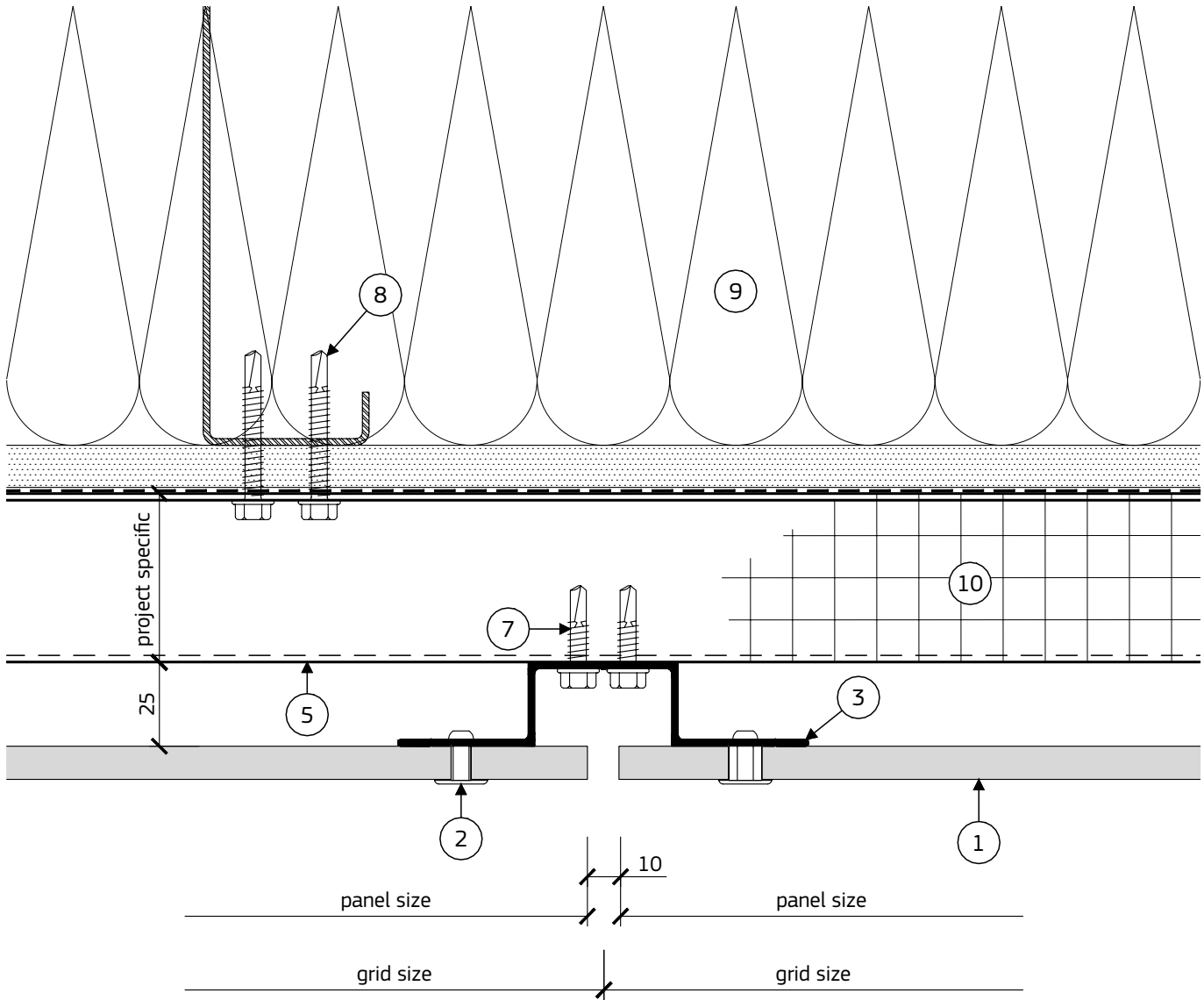
SYSTEM

USING HORIZONTAL RAILS

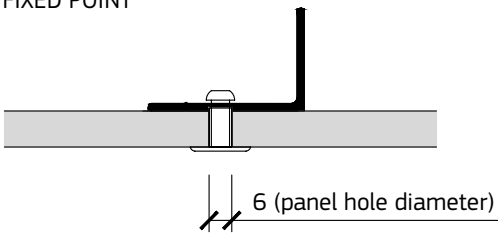
LEGEND

- ① FLAT PANEL
- ② RIVET Ø4.8x18 mm, HEAD 16 mm, PAINTED
- ③ HAT PROFILE 124/41x25, SLOTTED HOLES *art.No 01.5.631.02501.xxx*
- ④ J-RAIL 82/41x25, SLOTTED HOLES *art.No 01.4.631.02501.xxx*
- ⑤ HORIZONTAL PROFILE, PROJECT SPECIFIC
- ⑥ PROFILE L60x40x2 *art.No 01.1.60402.xxx*
- ⑦ SELF-DRILLING SCREW Ø6.3x25 mm, A2
- ⑧ SELF-DRILLING SCREW Ø6.3x45 mm, A2
- ⑨ STUD WALL
- ⑩ INSULATION
- ⑪ WINDOW SYSTEM
- ⑫ METAL TRIM / FLASHING / COPING
- ⑬ PERFORATED ALUMINUM SHEET

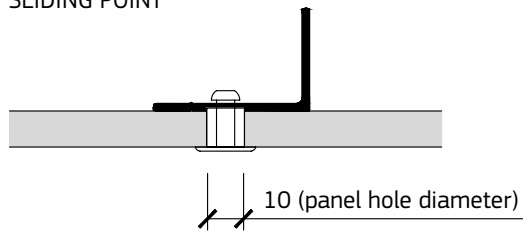
1.1 PLAN DETAIL



FIXED POINT

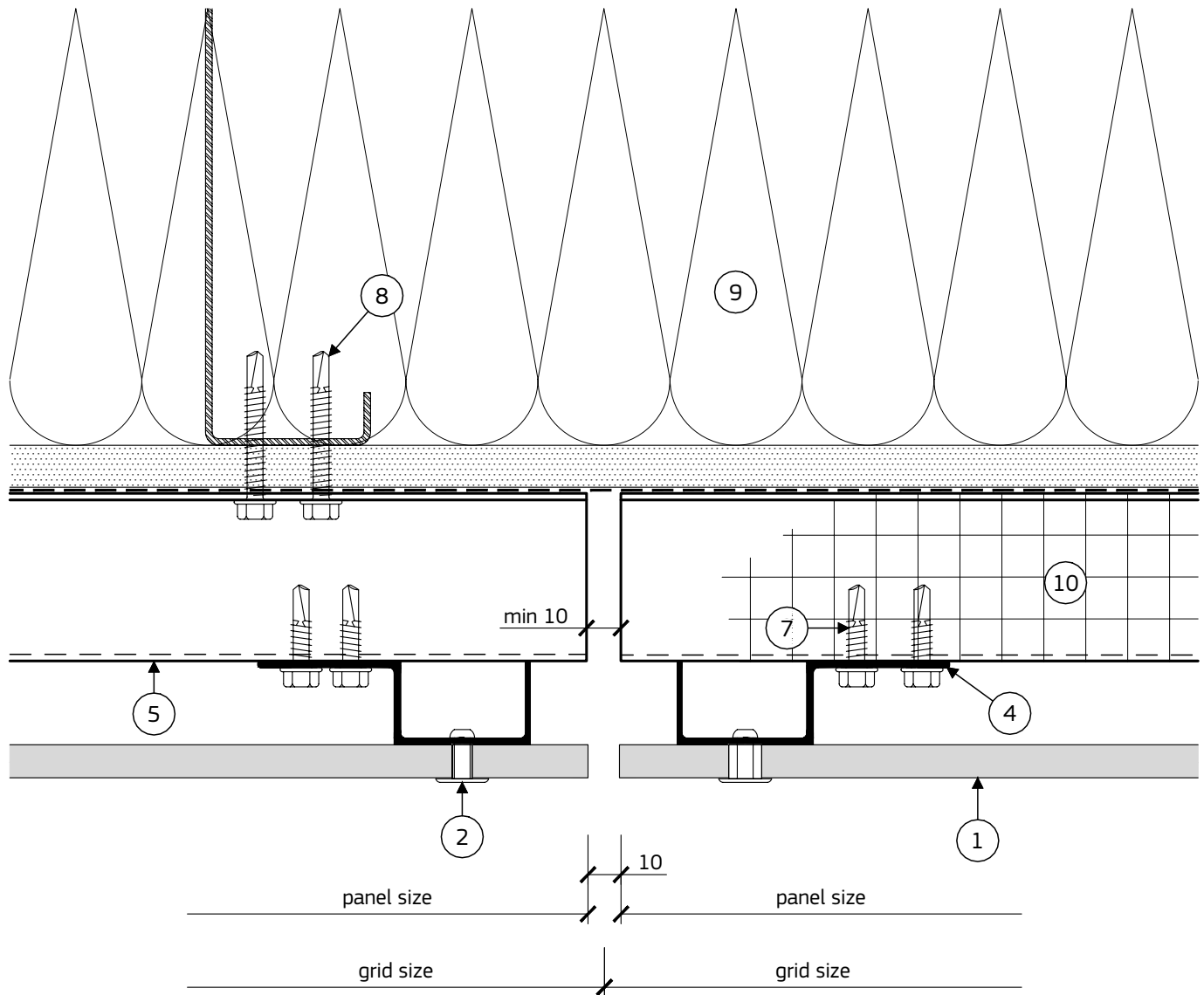


SLIDING POINT

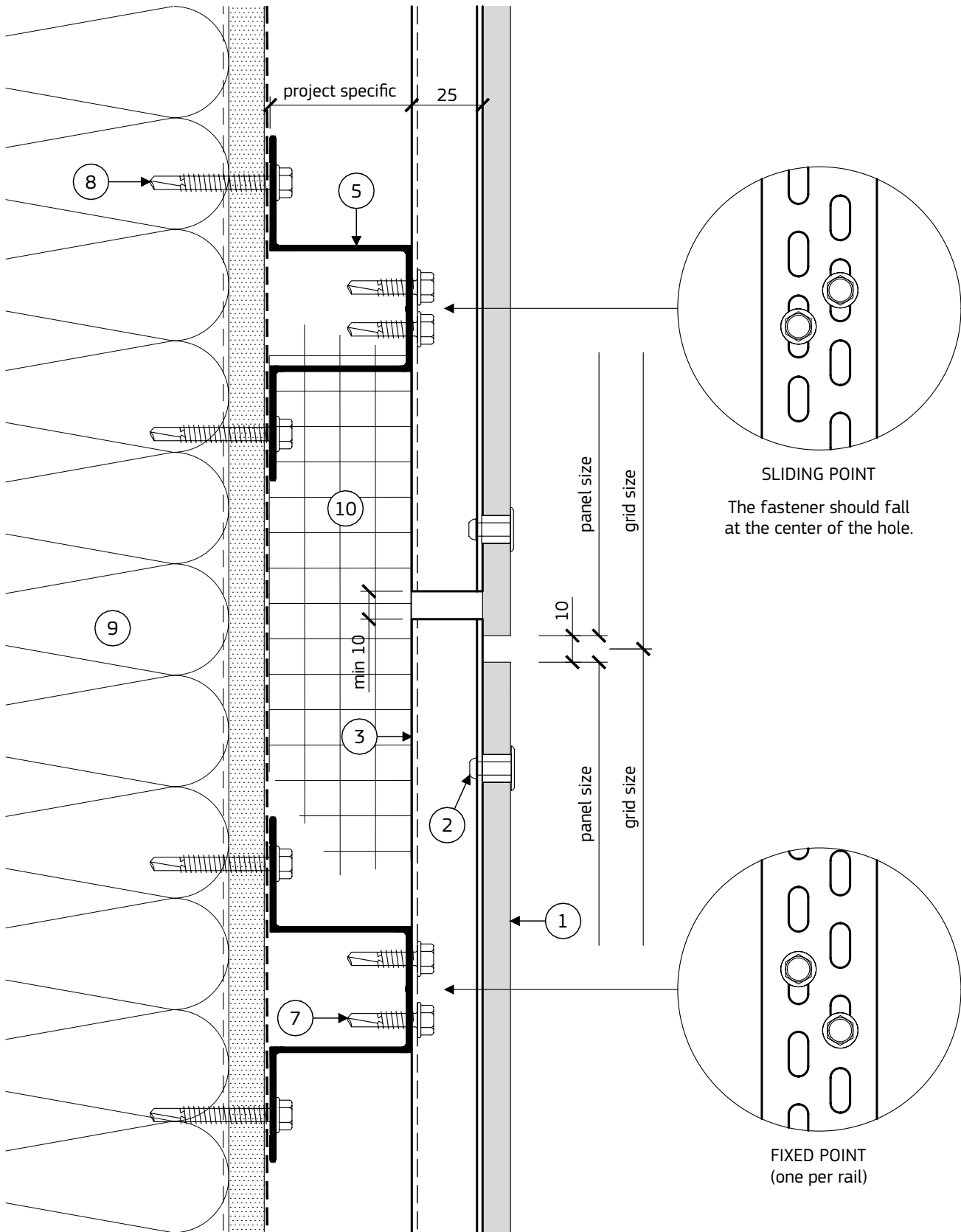


Rivets at sliding points must be installed centered on the oversize hole.

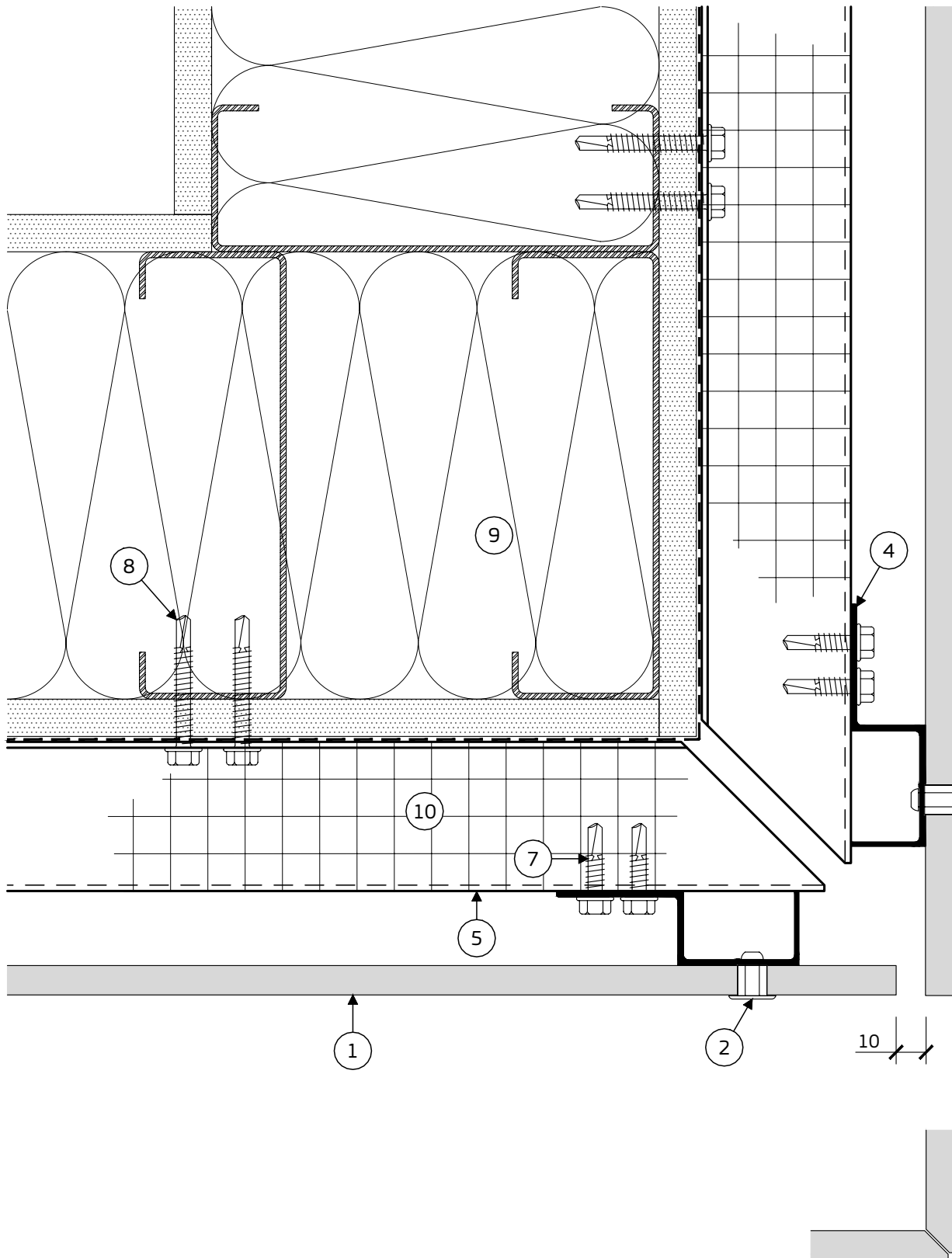
1.2 PLAN DETAIL



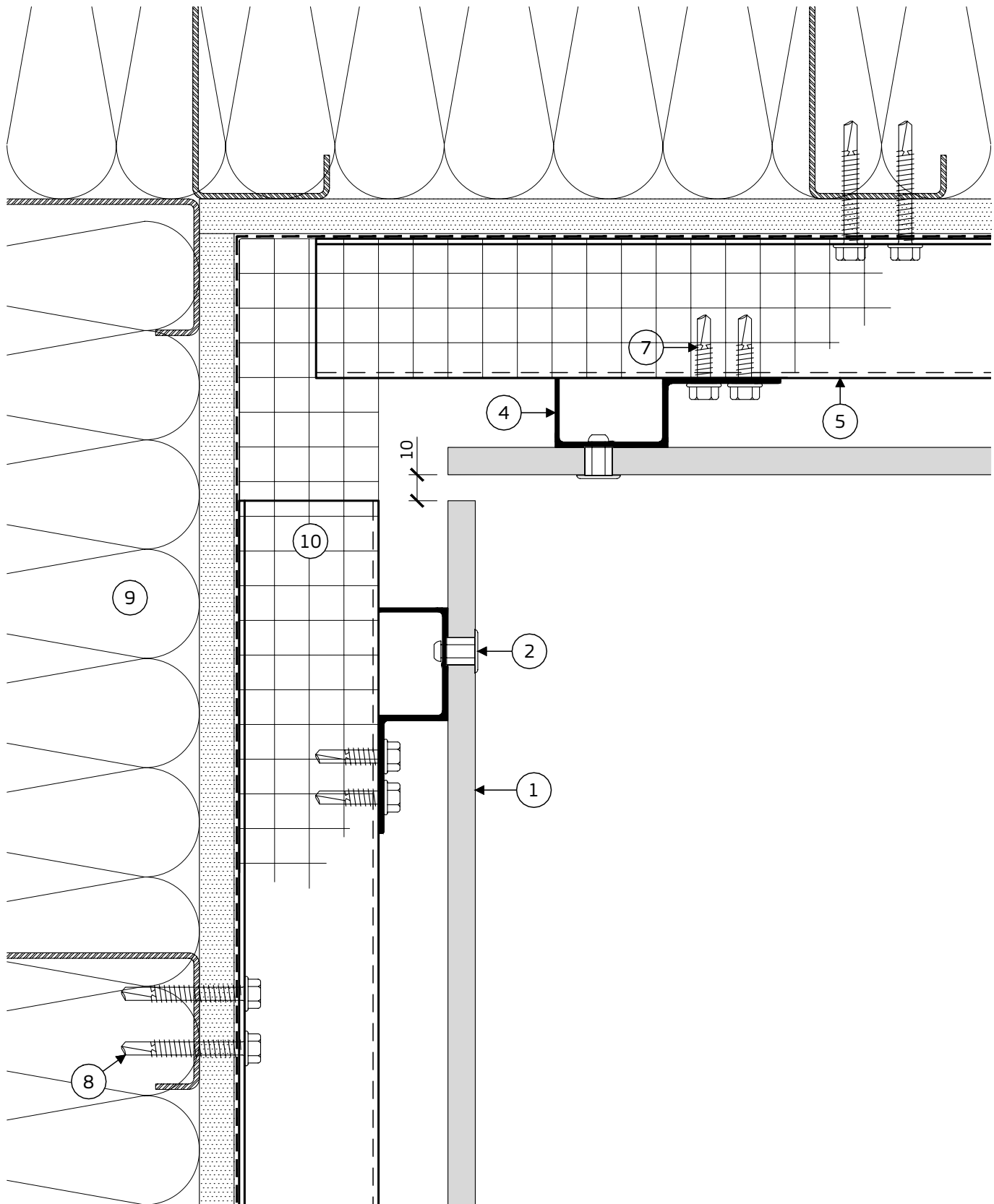
2.1 SECTION DETAIL



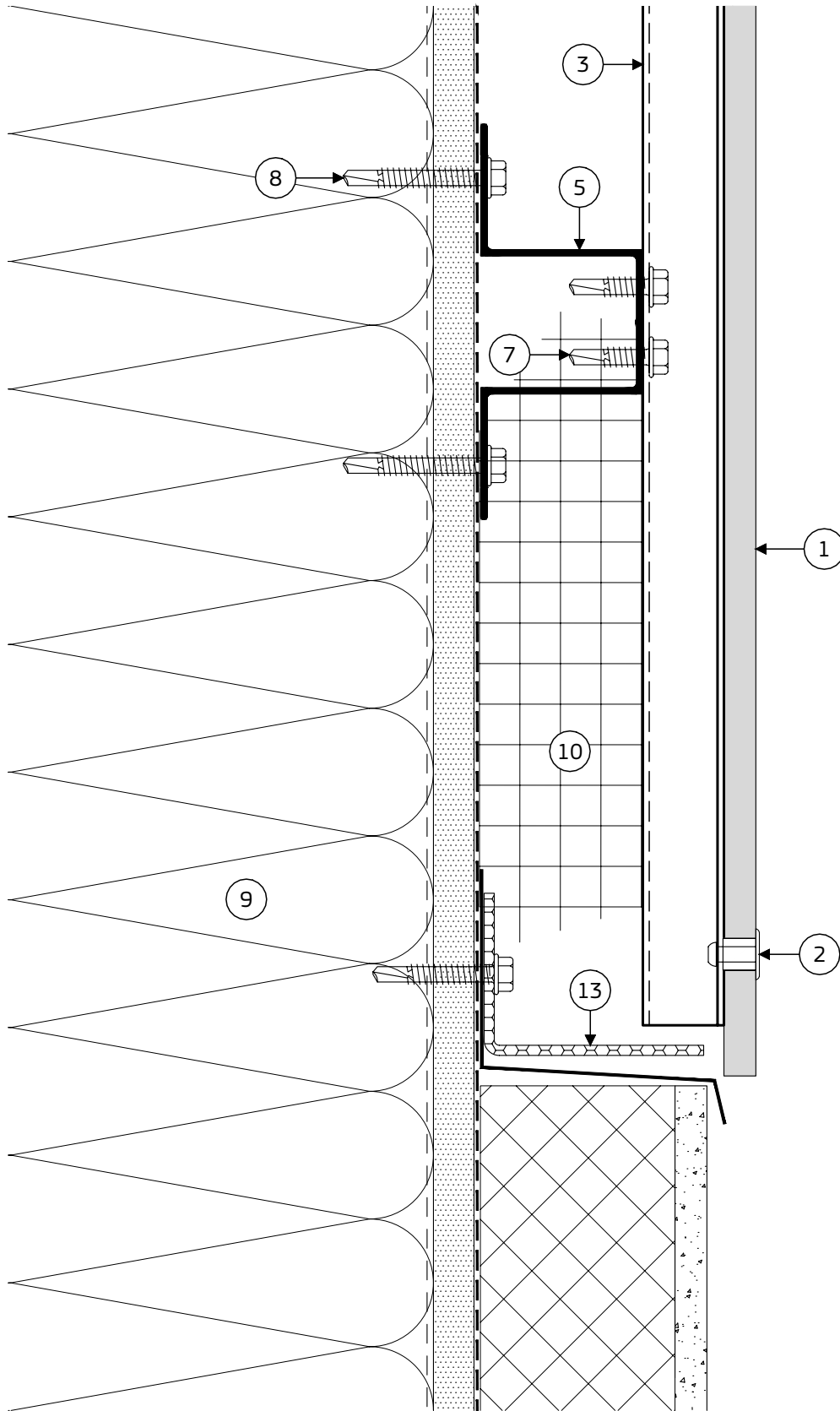
3.1 PLAN DETAIL - OUTSIDE CORNER



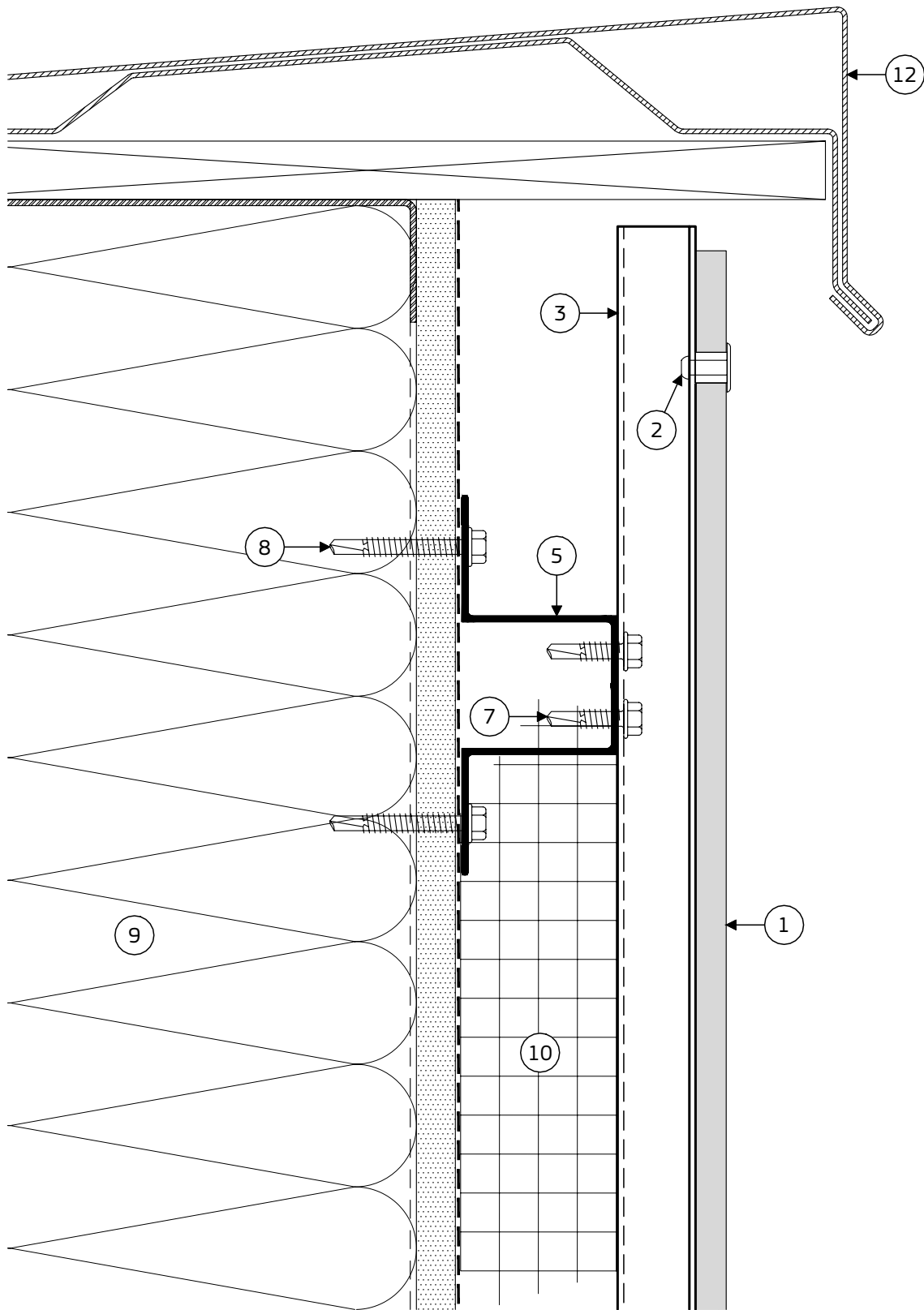
4.1 PLAN DETAIL - INSIDE CORNER



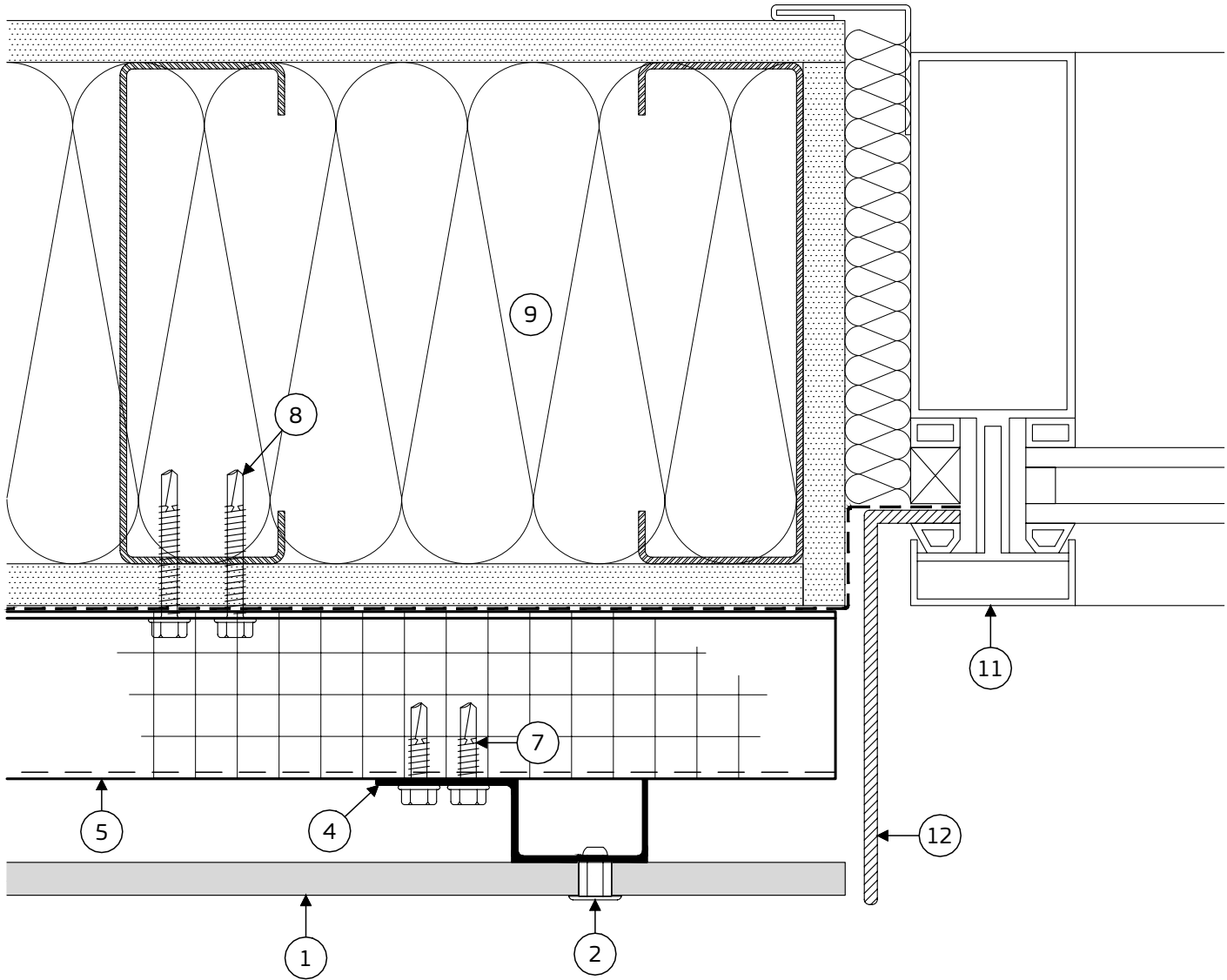
5.1 SECTION DETAIL - BASE



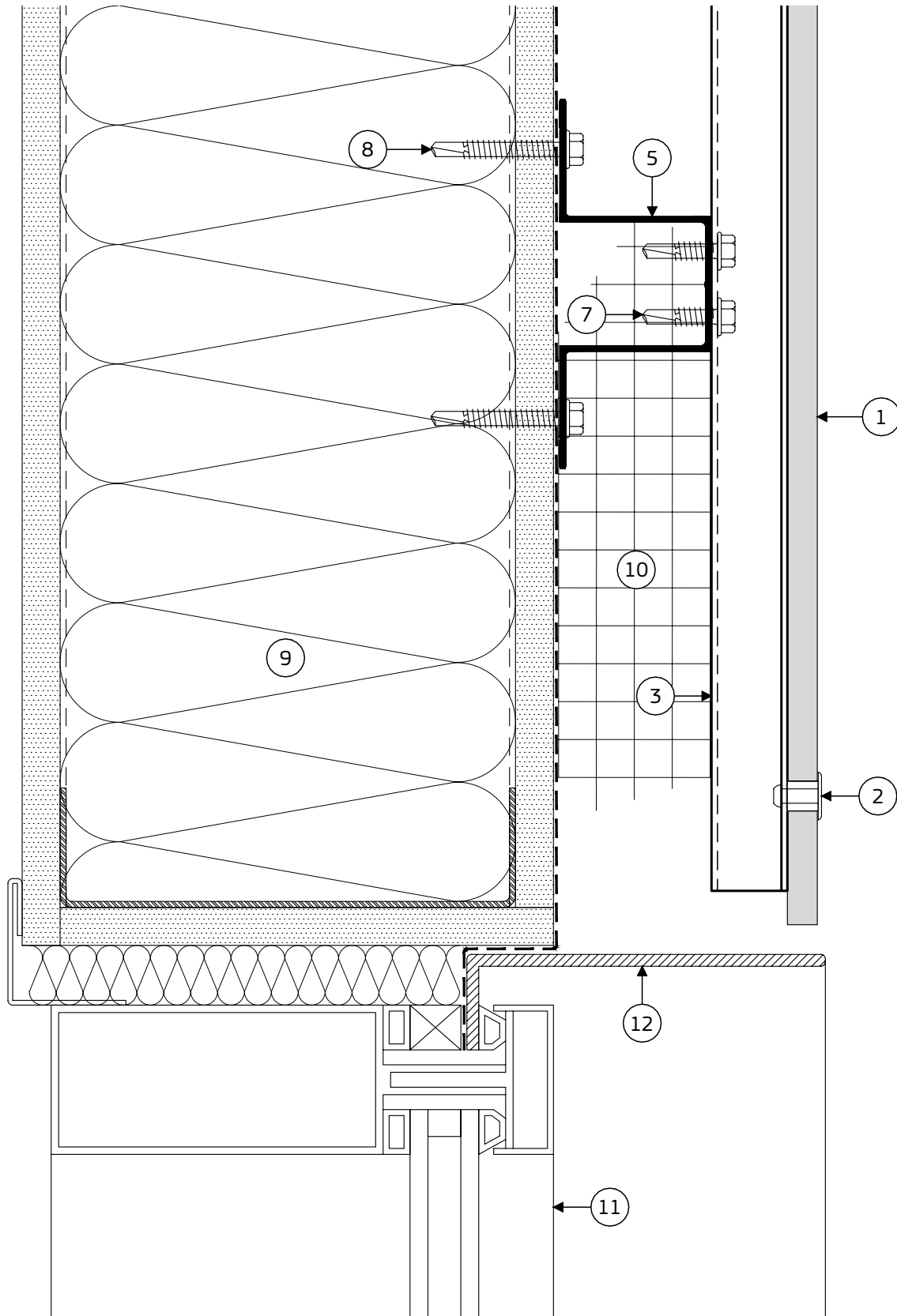
6.1 SECTION DETAIL - PARAPET



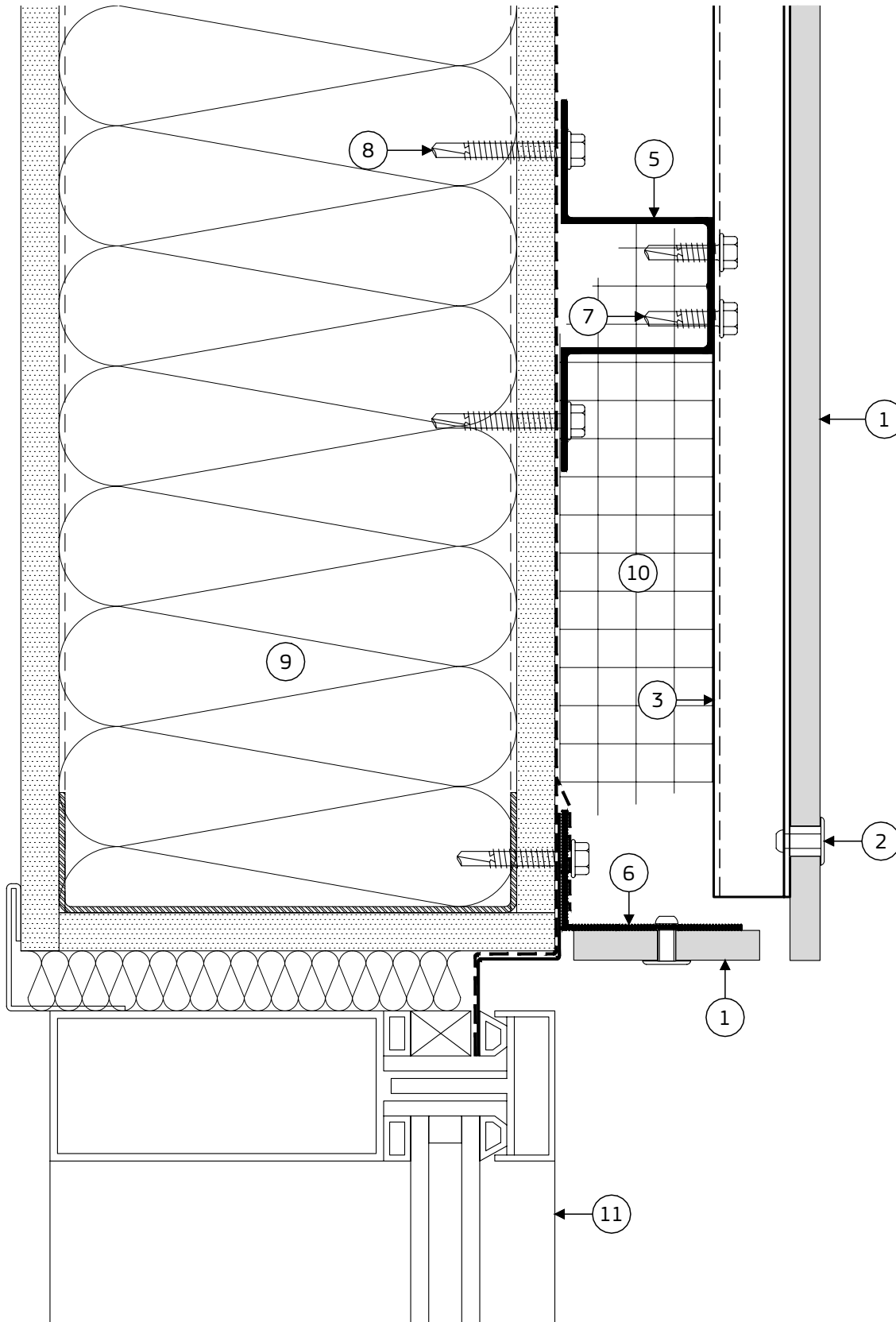
7.1 PLAN DETAIL - WINDOW JAMB



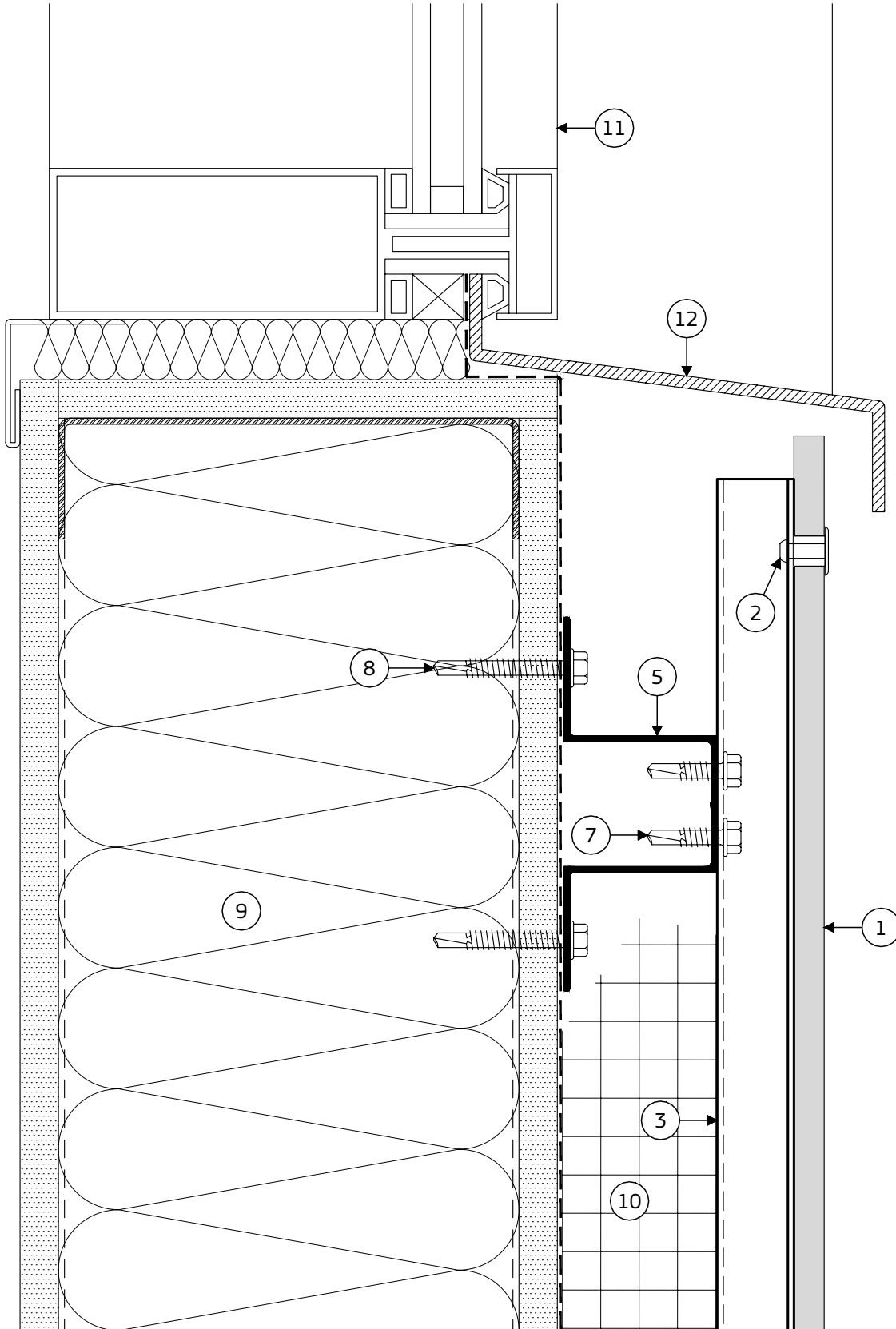
8.1 SECTION DETAIL - WINDOW HEAD



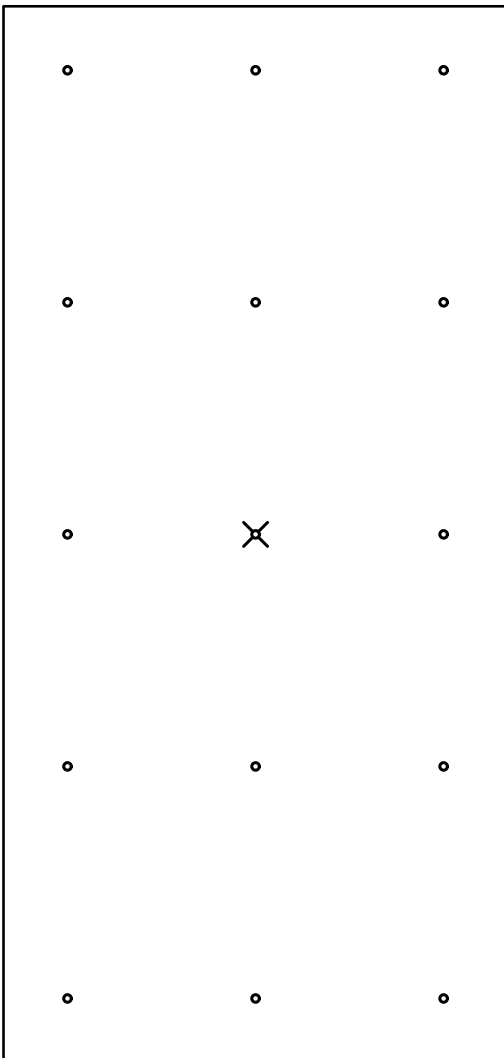
8.2 SECTION DETAIL - WINDOW HEAD



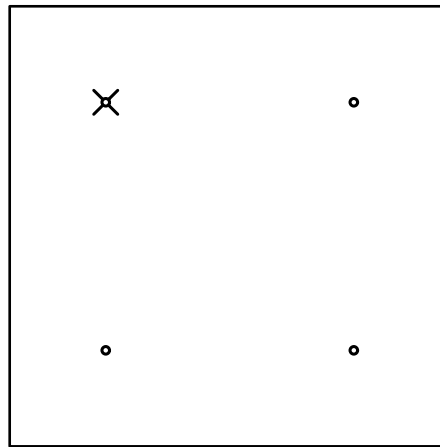
9.1 SECTION DETAIL - WINDOW SILL



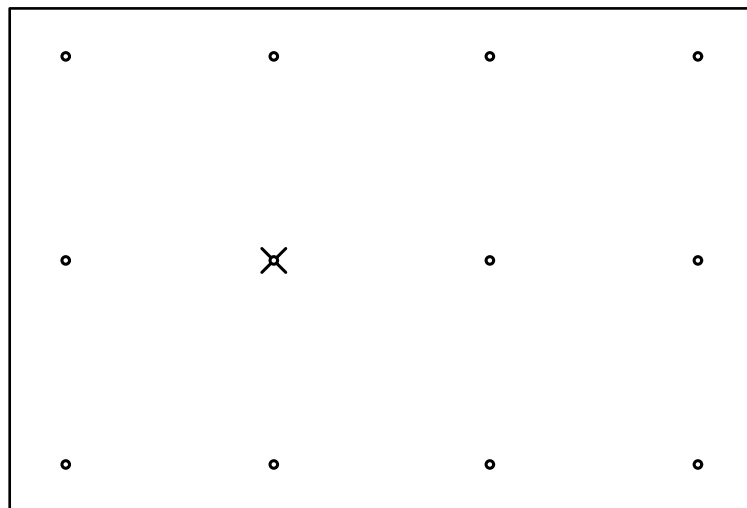
INSTALLATION DIAGRAMS



MULTI-SPAN PANEL



SINGLE-SPAN PANEL

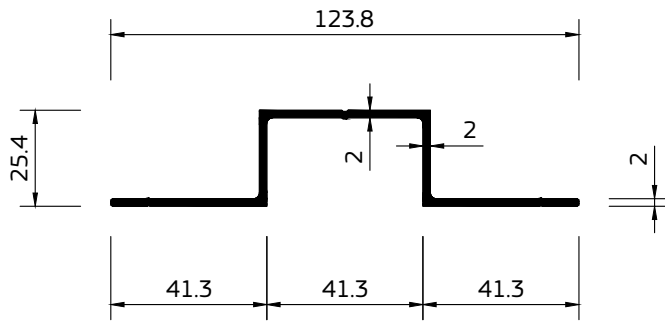


MULTI-SPAN PANEL

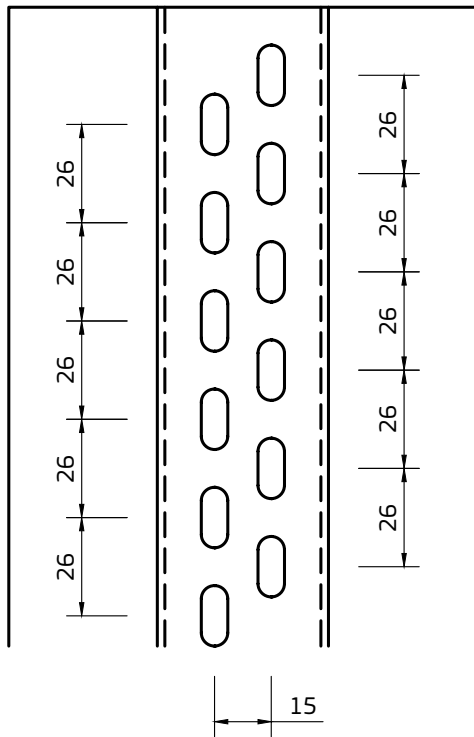
- ✕ Fixed point (dead load support)
- Sliding point (wind load support)

The diagrams are schematic.
Refer to panel manufacturer's technical data and installation instructions for the exact diagram.

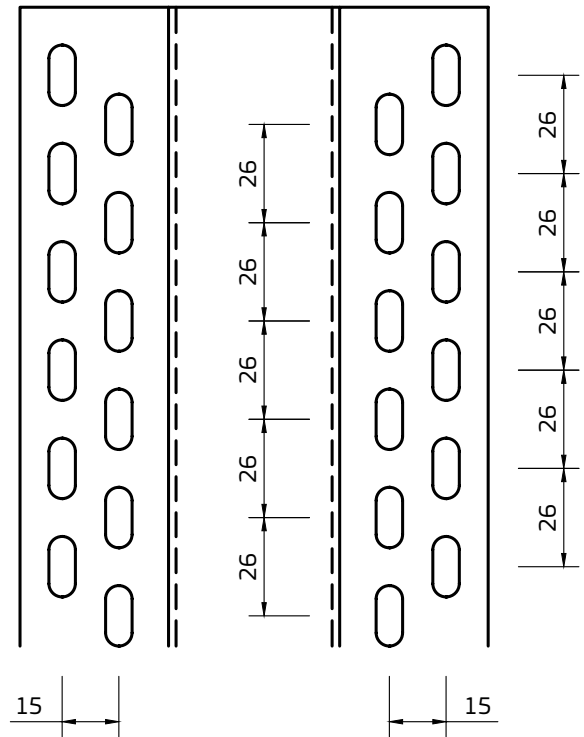
SYSTEM COMPONENTS



7x16 mm SLOTTED HOLES, OPTION 1



7x16 mm SLOTTED HOLES, OPTION 2



Material: AW 6063 T66

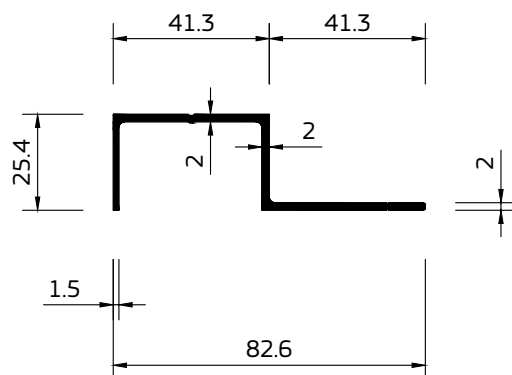
Article No	Description	Finish	Weight
01.5.02501.xxxP	HAT profile 124/41x25	painting black	926 g/m
01.5.02501.xxx	HAT profile 124/41x25	unpainted	
01.5.631.02501.xxxP	HAT rail 124/41x25, slotted holes, option 1	painting black	
01.5.631.02501.xxx	HAT rail 124/41x25, slotted holes, option 1	unpainted	
01.5.632.02501.xxxP	HAT rail 124/41x25, slotted holes, option 2	painting black	
01.5.632.02501.xxx	HAT rail 124/41x25, slotted holes, option 2	unpainted	

xxx - profile length

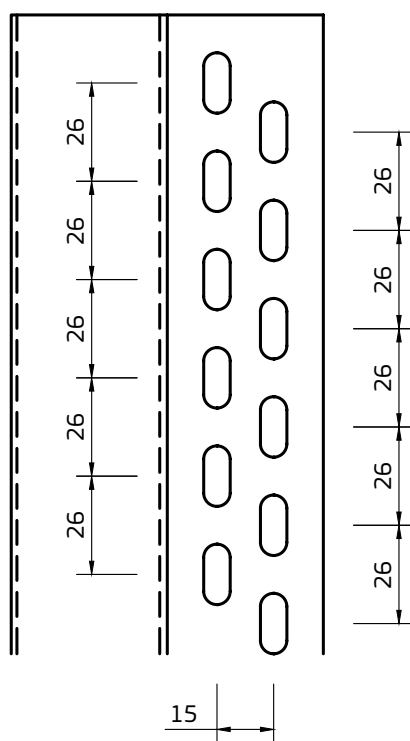
Standard length 6000 mm.

Other colors or anodized finishes on request.

SYSTEM COMPONENTS



7x16 mm SLOTTED HOLES



Material: AW 6063 T66

Article No	Description	Finish	Weight
01.4.02501.xxxP	J-rail 82/41x25	painting black	668 g/m
01.4.02501.xxx	J-rail 82/41x25	unpainted	
01.4.631.02501.xxxP	J-rail 82/41x25, slotted holes	painting black	
01.4.631.02501.xxx	J-rail 82/41x25, slotted holes	unpainted	

xxx - profile length

Standard length 6000 mm.
Other colors or anodized finishes on request.